



Australian Government

Department of the Environment, Water, Heritage and the Arts

**Marine and Tropical Sciences Research Facility (MTSRF)
Capricorn Bunker Oceanographic Array 2004-2006**

Project 2.5i.1 Regional Climate Scenarios

Project Leader: Dr Andreas Schiller, CSIRO.

Summary

A total of sixty-nine oceanographic instruments were deployed for this experiment throughout the Heron Island region. The deployments and recoveries took place during four field trip periods between the months of August 2004 and April 2006. Many instruments were positioned in two or more locations during the study. The following figures and tables describe the oceanographic instruments that were deployed for, usually, six months at a time.

The locations of the instrument deployments can be categorized into three general areas, which include Heron, Lady Musgrave and cross-shelf (Figure 1). The Heron area includes instruments that were deployed within the Heron Island lagoon as well as some deployments just outside of the lagoon. The Lady Musgrave area includes instruments that were deployed very close to Lady Musgrave Island, which is located at the SE of the Capricorn-Bunker group. The cross-shelf area includes instruments that were deployed along a transect of the shelf. The remaining figures (Figure 2, Figure 3, Figure 4, Figure 5, and Figure 6) show where each of the instruments were deployed.

- **Table 1** categorises each of the different instruments as specific instrument types and the main parameter measured. Many instruments have sensing capabilities beyond their primary function listed and thus measure additional properties.

-

- **Table 2** describes the locations of each of the sites within these general areas.
- Upon each deployment, a new “station” was designated. These stations are located very closely to the associated site, but either have their own precise coordinates or associated depth.
- **Table 3** lists the stations associated with each site.
- **Table 4** and **Table 5** list all of the instruments deployed throughout the study period. Several instruments are listed multiple times because they were deployed more than once. Each record represents one deployment. In Table 4 the deployments are grouped according to region: Heron Island, Lady Musgrave and cross-shelf transect. Table 5 lists the instrument deployments according to instrument type. They are grouped into the following categories: Tide gauges, weather stations, current meters, temperature recorders, wave/tide recorders, temperature salinity recorders, stream flow loggers, wave/current profilers, current profilers.

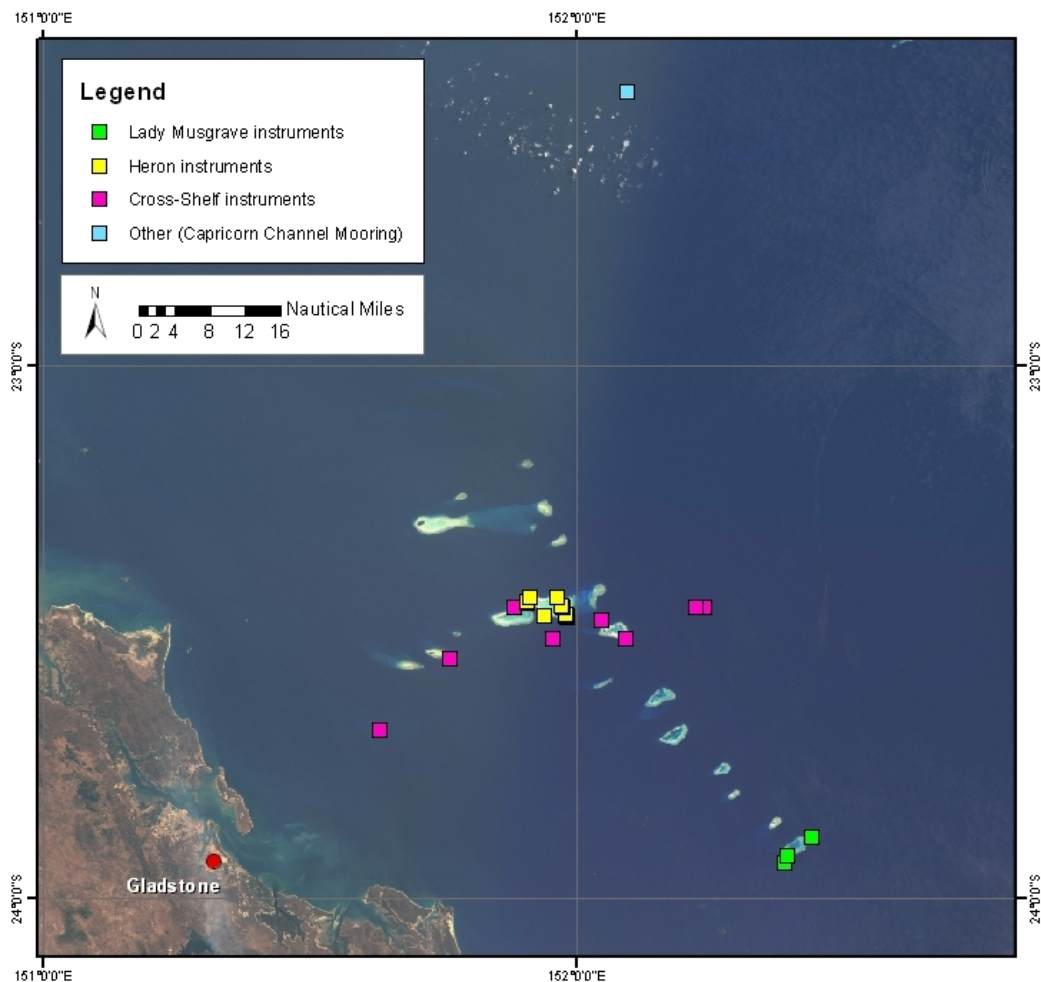


Figure 1: This map categorizes each of the oceanographic instrument deployments according to three general areas; Lady Musgrave, Heron and Cross-Shelf.

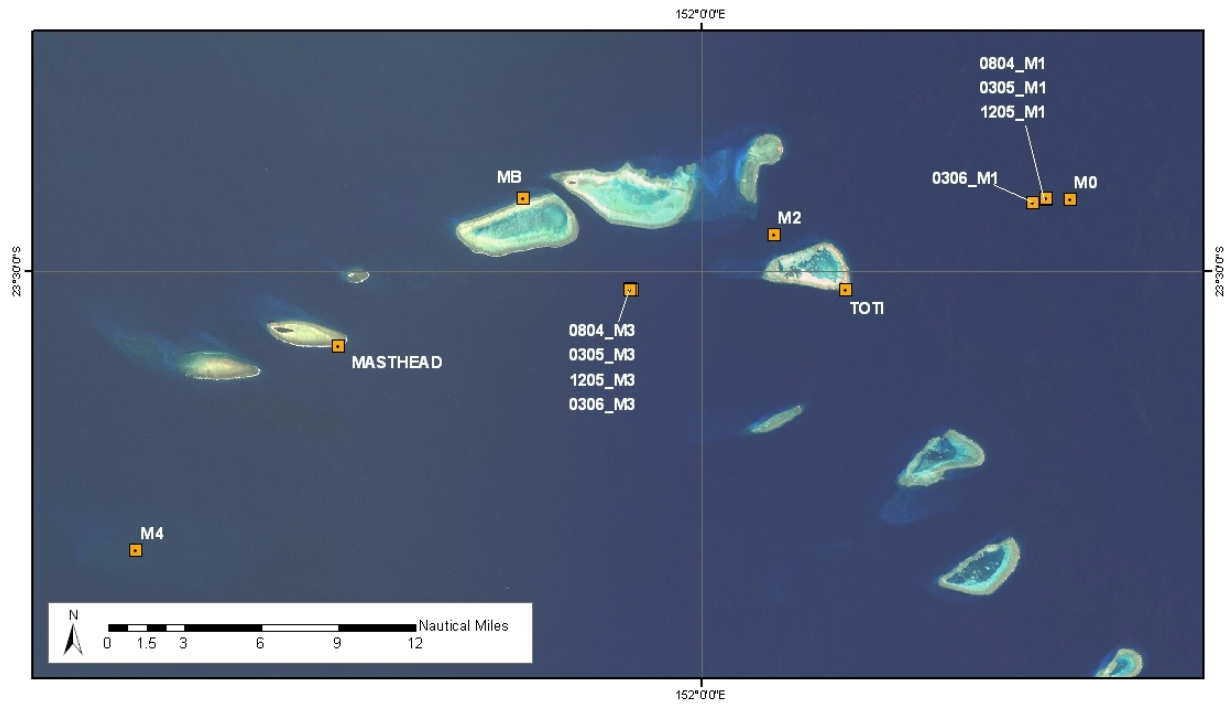


Figure 2: Instruments deployed in the cross-shelf region.

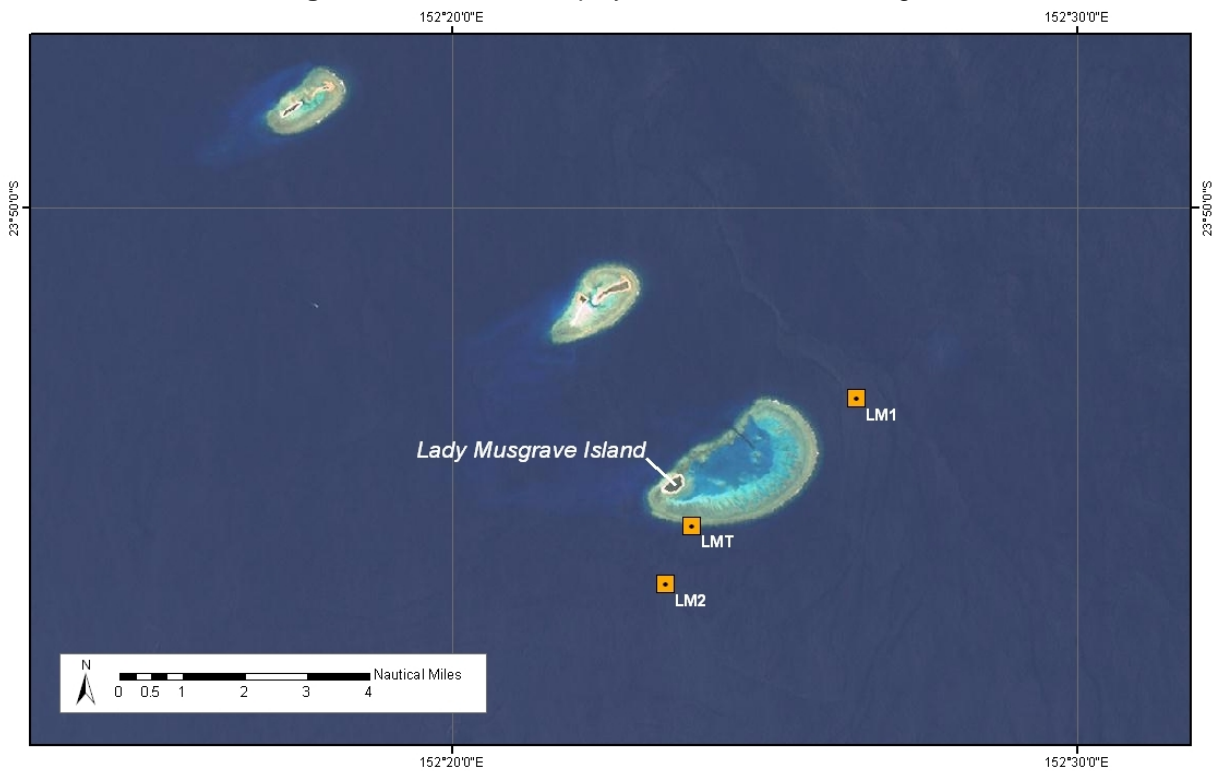


Figure 3: Instruments deployed near Lady Musgrave Island.

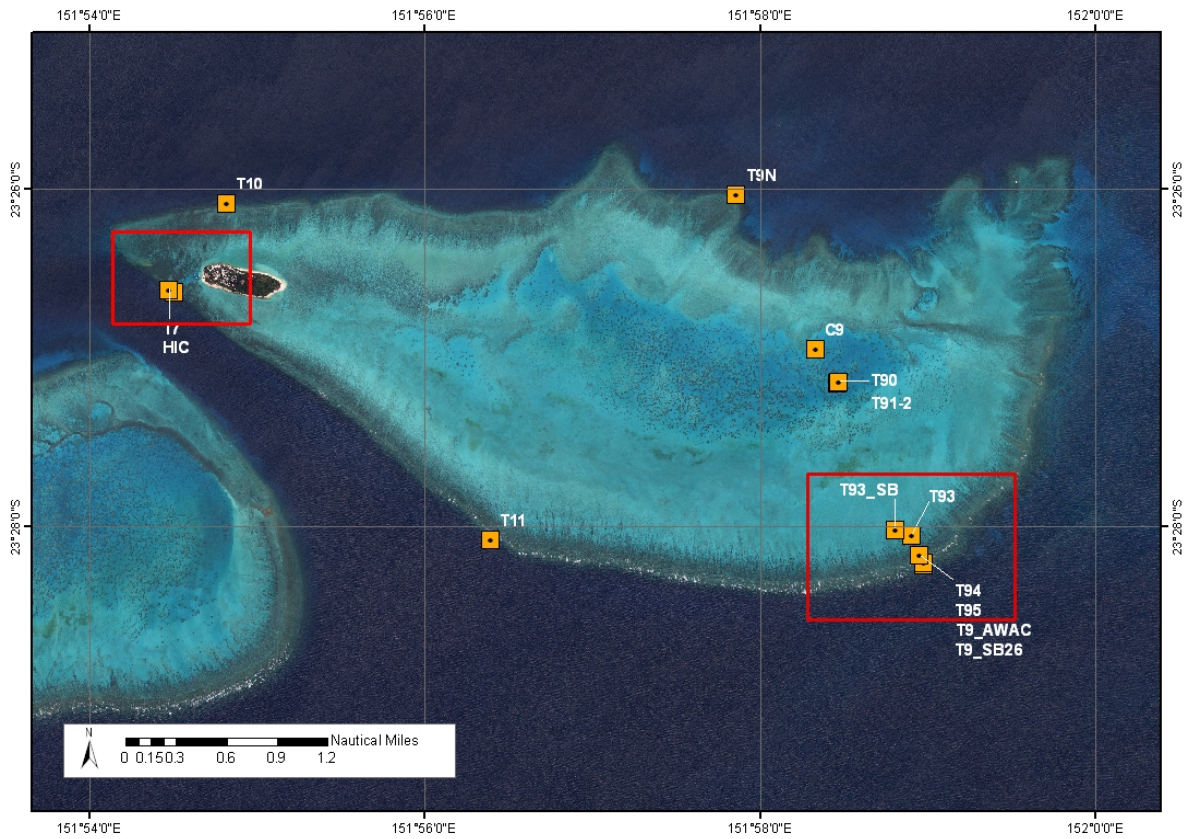


Figure 4: Instruments deployed in and around the Heron Island lagoon. **Figure 5** and **Figure 6** are magnifications of the boxed-areas.

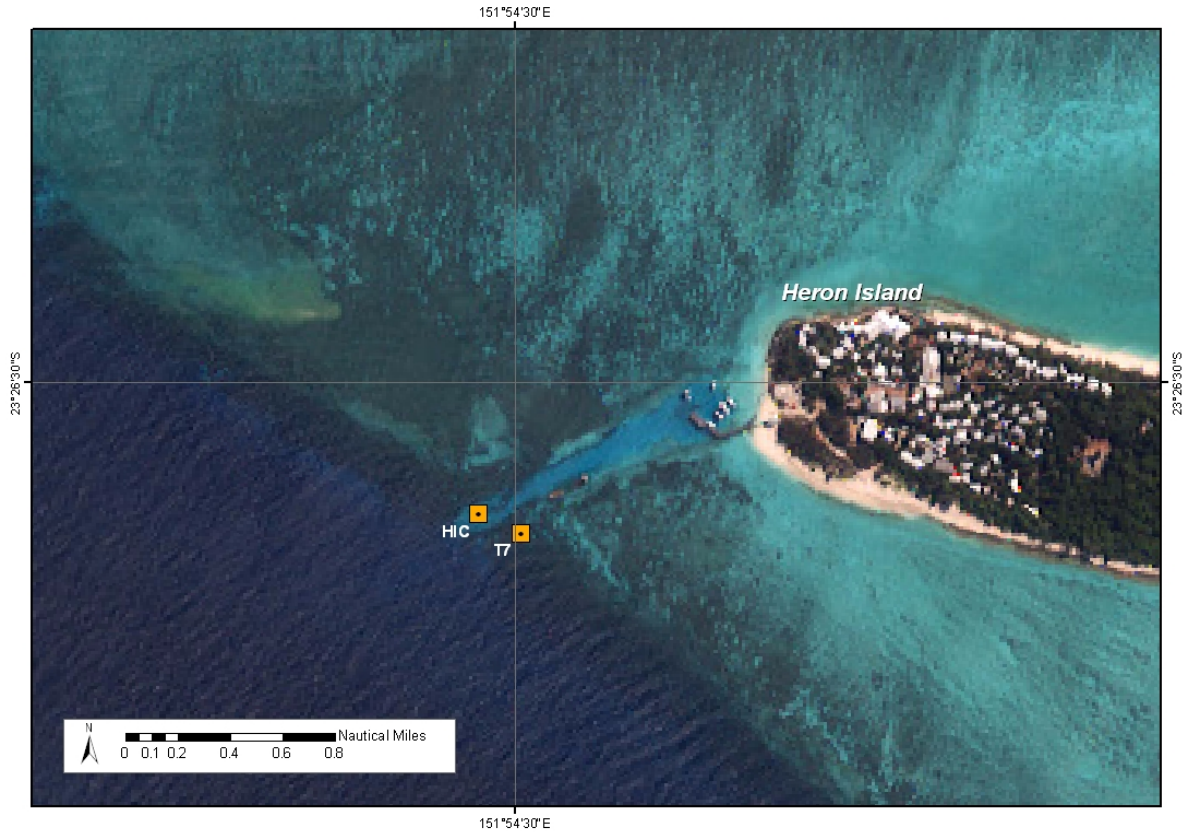


Figure 5: Magnification of the boxed area at the western end of **Figure 4**. This is the channel leading to the Heron Island pier.

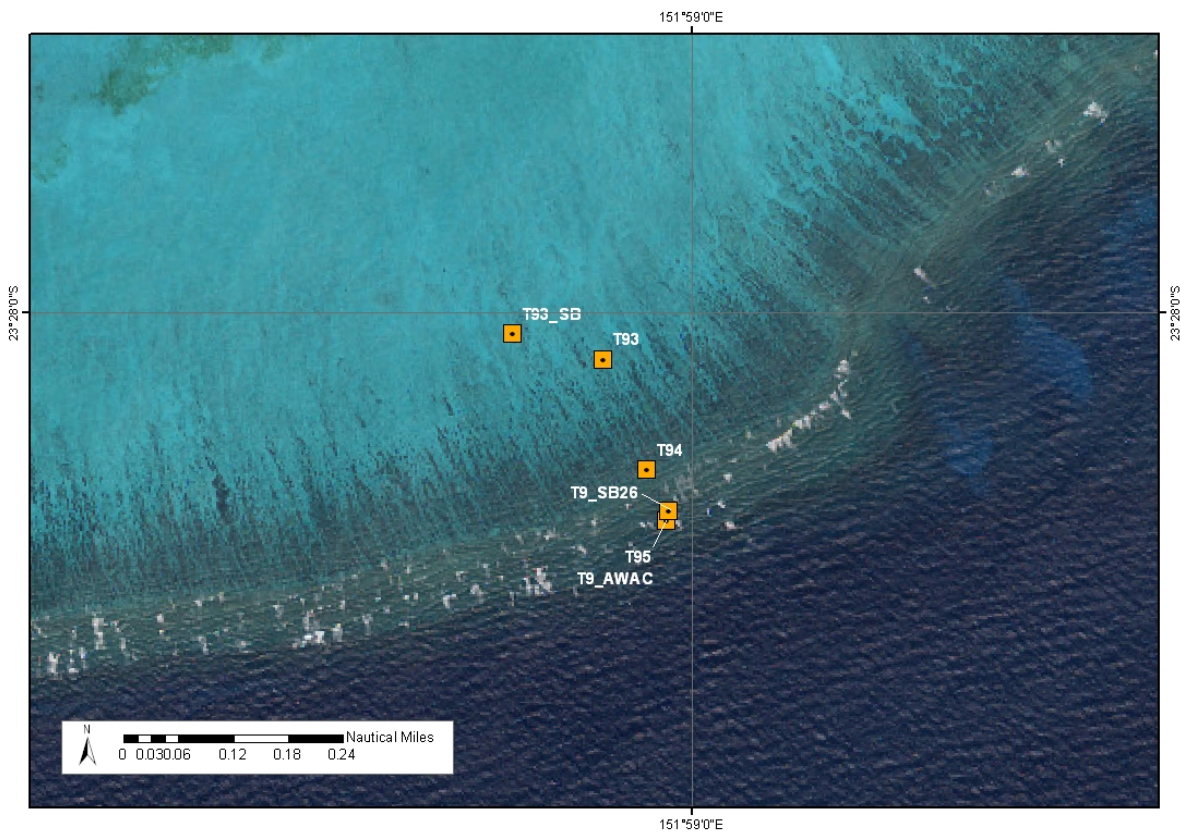


Figure 6: Magnification of the boxed area at the SE corner of **Figure 4**.

Table 1: Types of instruments used

Instrument Type	Instruments
Tide gauge	<i>one</i> AIMS Workshop, <i>one</i> Brancker XR-420-TG,
Weather station	<i>one</i> Campbell Scientific
Current meter	<i>four</i> InterOcean S4, <i>one</i> Nortek Easy Q
ADCP	<i>three</i> Nortek Aquapro, <i>one</i> Nortek Continental, <i>six</i> RDI Workhorse
Wave/current profiler	<i>one</i> Nortek AWAC
Temperature salinity recorder	<i>five</i> SBE16
Temperature recorder	<i>forty-three</i> SBE39
Wave/tide recorder	<i>three</i> SBE26

Table 2: Sites of instrument deployment, grouped together by region

(a) Heron Island Lagoon :

Site Code	Latitude (deg)	Latitude (min)	Longitude (deg)	Longitude (min)	Description
HERON_C9	-23	26.946	151	58.332	Blue Lagoon
HERON_CC	-22	29.137	152	5.737	Capricorn Channel Mooring
HERON_HIC	-23	26.5926	151	54.4746	Heron Island Channel
HERON_T10	-23	26.081	151	54.817	Blue Pools
HERON_T11	-23	28.079	151	56.396	South Park
HERON_T7	-23	26.607	151	54.504	Wistari Channel, Coral Gardens
HERON_T9_AWAC	-23	28.227	151	58.972	Next to station T9_5
HERON_T9_SB26	-23	28.216	151	58.975	New position next to T95A
HERON_T90	-23	27.141	151	58.4706	Surface buoy
HERON_T91_2	-23	27.151	151	58.461	Big Bommie Lagoon
HERON_T93	-23	28.05	151	58.906	Lagoon
HERON_T93_SB	-23	28.0218	151	58.8804	Surface buoy
HERON_T94	-23	28.172	151	58.951	Lagoon
HERON_T95	-23	28.227	151	58.972	Temperature transect
HERON_T9N	-23	26.029	151	57.859	Second point transect

(b) Lady Musgrave:

Site Code	Latitude (deg)	Latitude (min)	Longitude (deg)	Longitude (min)	Description
HERON_LM1	-23	53.0303	152	26.484	Mooring 1
HERON_LM2	-23	56.0018	152	23.4201	Mooring 2
HERON_LMT	-23	55.072	152	23.841	Transect

(c) Cross-shelf transect:

Site Code	Latitude (deg)	Latitude (min)	Longitude (deg)	Longitude (min)	Description
HERON_0305_M1	-23	27.228	152	13.473	Mooring M1
HERON_0305_M3	-23	30.72	151	57.196	Mooring M3
HERON_0306_M1	-23	27.33	152	12.99	Mooring M1
HERON_0306_M3	-23	30.75	151	57.31	Mooring M3
HERON_0804_M1	-23	27.219	152	13.495	Mooring M1
HERON_0804_M3	-23	30.759	151	57.308	Mooring M3
HERON_1205_M1	-23	27.19	152	13.48	Mooring M1
HERON_1205_M3	-23	30.73	151	57.21	Mooring M3
HERON_M0	-23	27.23	152	14.421	Mooring M0
HERON_M2	-23	28.5762	152	2.8422	Mooring M2
HERON_M4	-23	40.9098	151	37.8894	Rock Cod Shoal, M4
HERON_MASTHEAD	-23	32.93	151	45.801	Masthead Island
HERON_MB	-23	27.166	151	53.014	Metoc Buoy - Wistari Reef
HERON_TOTI	-23	30.751	152	5.638	One Tree Island

Table 3: Study sites with associated stations

Site	Stations
HERON_0305_M1	M1_1, M1_2, M1_3, M1_4, M1_5, M1_6
HERON_0305_M3	M3_1, M3_2, M3_3, M3_4, M3_5
HERON_0306_M1	M1_1, M1_2, M1_3, M1_4, M1_5, M1_6
HERON_0306_M3	M3_1, M3_2, M3_3, M3_4
HERON_0804_M1	M11, M12, M13
HERON_0804_M3	M31, M32
HERON_1205_M1	M1_1, M1_2, M1_3, M1_4, M1_5, M1_6
HERON_1205_M3	M3_1, M3_2, M3_3, M3_4, M3_5
HERON_C9	C9, C9T
HERON_CC	CC
HERON_HIC	HIC
HERON_LM1	LM1_1, LM1_2, LM1_3
HERON_LM2	LM2_1, LM2_2
HERON_LMT	LMT_2, LMT_3, LMT_4
HERON_M0	M0
HERON_M2	M2_1, M2_2
HERON_M4	RCS_M4_1, RCS_M4_2
HERON_MASTHEAD	TMH_1, TMH_2, TMH_3, TMH_4
HERON_MB	MB_1, MB_2, MB_3, METOC BUOY
HERON_T10	T10_1, T10_2, T10_3, T10_4, T10_5
HERON_T11	T11_1, T11_2, T11_3, T11_4, T11_5
HERON_T7	T7_1, T7_2, T7_3, T7_4, T7_5, T7_NOR, T7_SURFBUOY, T7_TG
HERON_T9_AWAC	T9_AWAC
HERON_T9_SB26	T9_SB26
HERON_T90	T90
HERON_T91_2	T9_1, T9_2, T91, T92
HERON_T93	T9_3, T93
HERON_T93_SB	T93_SB
HERON_T94	T9_4, T94
HERON_T95	T9_5, T95
HERON_T9N	T9N_1, T9N_2, T9N_3, T9N_4, T9N_ADCP
HERON_TOTI	TOTI_1, TOTI_2

Table 4: Instrument Locations
(a) Heron Island

Station	Instrument	Deployment	Recovery	Deployment Type	Depth (m)
C9	INTEROCEAN, CURRENT METER - S4, serial no. 54564	Apr 2004	Mar 2005	Transect	1.6 LAT
C9	INTEROCEAN, CURRENT METER - S4, serial no. 54615	Mar 2005	Dec 2005	Transect	1.6 LAT
C9	INTEROCEAN, CURRENT METER - S4, serial no. 54837	Dec 2005	Mar 2006	S4 Tripod	1.6 LAT
C9T	SEABIRD, TEMPERATURE RECORDER - SBE39, serial no. 0759	Mar 2005	Mar 2006	Transect	1.6 LAT
CC	RDI, ADCP - WORKHORSE, serial no. 6372	Dec 2005	Mar 2006	Mooring	43.2
HIC	NORTEK, STREAM FLOW LOGGER - EASY Q, serial no. 0860	Dec 2005	Mar 2006	Stationary Transect	2.2 LAT
T10_1	SEABIRD, TEMPERATURE RECORDER - SBE39, serial no. 0676	Mar 2005	Mar 2006	Temperature transect	13.8 LAT
T10_1	SEABIRD, TEMPERATURE RECORDER - SBE39, serial no. 0927	Apr 2004	Mar 2005	Temperature transect	13.5 LAT
T10_2	SEABIRD, TEMPERATURE RECORDER - SBE39, serial no. 0760	Mar 2005	Dec 2005	Temperature transect	8.9 LAT
T10_2	SEABIRD, TEMPERATURE RECORDER - SBE39, serial no. 0921	Apr 2004	Mar 2005	Temperature transect	8.4 LAT
T10_3	SEABIRD, TEMPERATURE RECORDER - SBE39, serial no. 0932	Apr 2004	Mar 2005	Temperature transect	3.5 LAT
T10_3	SEABIRD, TEMPERATURE RECORDER - SBE39, serial no. 1522	Mar 2005	Mar 2006	Temperature transect	4 LAT
T10_4	SEABIRD, TEMPERATURE RECORDER - SBE39, serial no. 0926	Mar 2005	Dec 2005	Temperature transect	1.5 LAT
T10_4	SEABIRD, TEMPERATURE RECORDER - SBE39, serial no. 1060	Apr 2004	Mar 2005	Temperature transect	0.9 LAT
T10_5	SEABIRD, TEMPERATURE RECORDER - SBE39, serial no. 0923	Apr 2004	Mar 2005	Temperature transect	-0.7 LAT
T10_5	SEABIRD, TEMPERATURE RECORDER - SBE39, serial no. 1518	Mar 2005	Mar 2006	Temperature transect	0 LAT
T11_1	SEABIRD, TEMPERATURE RECORDER - SBE39, serial no. 0917	Mar 2005	Mar 2006	Temperature transect	15.3 LAT
T11_2	SEABIRD, TEMPERATURE RECORDER - SBE39, serial no. 0934	Mar 2005	Mar 2006	Temperature transect	9.9 LAT
T11_3	SEABIRD, TEMPERATURE RECORDER - SBE39, serial no. 0930	Mar 2005	Mar 2006	Temperature transect	4.9 LAT

Station	Instrument	Deployment	Recovery	Deployment Type	Depth (m)
T11_4	SEABIRD, TEMPERATURE RECORDER - SBE39, serial no. 0935	Mar 2005	Dec 2005	Temperature transect	2.2 LAT
T11_5	SEABIRD, TEMPERATURE RECORDER - SBE39, serial no. 1519	Mar 2005	Mar 2006	Temperature transect	0.9 LAT
T7_1	SEABIRD, TEMPERATURE RECORDER - SBE39, serial no. 1051	Dec 2005	Mar 2006	Temperature transect	14.9 LAT
T7_1	SEABIRD, TEMPERATURE RECORDER - SBE39, serial no. 1053	Apr 2004	Mar 2005	Temperature transect	15.1 LAT
T7_2	AIMS WORKSHOP, TG, serial no. 17	Apr 2004	Mar 2005	Tide Gauge - Reef slope transect	10.5 LAT
T7_2	SEABIRD, TEMPERATURE RECORDER - SBE39, serial no. 1058	Apr 2004	Mar 2005	Temperature transect	10.5 LAT
T7_2	SEABIRD, TEMPERATURE RECORDER - SBE39, serial no. 1514	Mar 2005	Dec 2005	Temperature transect	15.1 LAT
T7_3	SEABIRD, TEMPERATURE RECORDER - SBE39, serial no. 0920	Mar 2005	Mar 2006	Temperature transect	5.3 LAT
T7_3	SEABIRD, TEMPERATURE RECORDER - SBE39, serial no. 1052	Apr 2004	Mar 2005	Temperature transect	5.3 LAT
T7_4	SEABIRD, TEMPERATURE RECORDER - SBE39, serial no. 0922	Apr 2004	Mar 2005	Temperature transect	2.4 LAT
T7_4	SEABIRD, TEMPERATURE RECORDER - SBE39, serial no. 0929	Mar 2005	Dec 2005	Temperature transect	2.4 LAT
T7_5	SEABIRD, TEMPERATURE RECORDER - SBE39, serial no. 0675	Mar 2005	3976	Temperature transect	1.4 LAT
T7_5	SEABIRD, TEMPERATURE RECORDER - SBE39, serial no. 1054	Apr 2004	Mar 2005	Temperature transect	1.4 LAT
T7_NO R	NORTEK, ADCP - AQUAPRO, serial no. 1634	Dec 2005	Mar 2006	Steel Picket Mooring	14 LAT
T7_NO R	NORTEK, ADCP - AQUAPRO, serial no. 1356	Mar 2005	Dec 2005	Steel Picket Mooring	14.1 LAT
T7_SU RFBUO Y	SEABIRD, TEMPERATURE RECORDER - SBE39, serial no. 1052	Dec 2005	Mar 2006	Transect	0
T7_TG	BRANCKER, TEMPERATURE PRESSURE RECORDER - XR-420-TG, serial no. 10092	Mar 2005	Dec 2005	Transect	10.5 LAT
T7_TG	BRANCKER, TEMPERATURE PRESSURE RECORDER - XR-420-TG, serial no. 10092	Dec 2005	Mar 2006	Reef slope transect	10.5 LAT

Station	Instrument	Deployment	Recovery	Deployment Type	Depth (m)
T9_1	SEABIRD, TEMPERATURE RECORDER - SBE39, serial no. 0732	Apr 2004	Mar 2005	Temperature transect	-0.5 LAT
T9_2	SEABIRD, TEMPERATURE RECORDER - SBE39, serial no. 0918	Apr 2004	Mar 2005	Temperature transect	2.1 LAT
T9_3	SEABIRD, TEMPERATURE RECORDER - SBE39, serial no. 0931	Apr 2004	Mar 2005	Temperature transect	-0.2 LAT
T9_4	SEABIRD, TEMPERATURE RECORDER - SBE39, serial no. 1061	Apr 2004	Mar 2005	Temperature transect	-0.3 LAT
T9_5	SEABIRD, TEMPERATURE RECORDER - SBE39, serial no. 1051	Apr 2004	Mar 2005	Temperature transect	11 LAT
T9_AW AC	NORTEK, AWAC, serial no. 5130	Dec 2005	Mar 2006	Transect	11.9 LAT
T9_SB2 6	SEABIRD, WAVE TIDE RECORDER - SBE26, serial no. 1009	Dec 2005	Mar 2006	Transect	3.6 LAT
T90	SEABIRD, TEMPERATURE RECORDER - SBE39, serial no. 1525	Dec 2005	Mar 2006	Surface Buoy	0
T91	SEABIRD, TEMPERATURE RECORDER - SBE39, serial no. 0922	Mar 2005	Mar 2006	Temperature transect	-0.5 LAT
T92	SEABIRD, TEMPERATURE RECORDER - SBE39, serial no. 1058	Mar 2005	Mar 2006	Temperature transect	2.1 LAT
T93	SEABIRD, TEMPERATURE RECORDER - SBE39, serial no. 0927	Mar 2005	Mar 2006	Temperature transect	-0.2 LAT
T93_SB	SEABIRD, TEMPERATURE RECORDER - SBE39, serial no. 1524	Dec 2005	Mar 2006	Surface Buoy	0
T94	SEABIRD, TEMPERATURE RECORDER - SBE39, serial no. 1520	Mar 2005	Mar 2006	Temperature transect	-0.3 LAT
T95	SEABIRD, TEMPERATURE RECORDER - SBE39, serial no. 1521	Mar 2005	Dec 2005	Temperature transect	11 LAT
T9N_1	SEABIRD, TEMPERATURE RECORDER - SBE39, serial no. 0732	Mar 2005	Mar 2006	Temperature transect	9.9 LAT
T9N_2	SEABIRD, TEMPERATURE RECORDER - SBE39, serial no. 0931	Mar 2005	Mar 2006	Temperature transect	4.9 LAT
T9N_3	SEABIRD, TEMPERATURE RECORDER - SBE39, serial no. 0918	Mar 2005	Mar 2006	Temperature transect	1.9 LAT
T9N_4	SEABIRD, TEMPERATURE RECORDER - SBE39, serial no. 1061	Mar 2005	Mar 2006	Temperature transect	0.9 LAT
T9N_A DCP	RDI, ADCP - WORKHORSE, serial no. 974	Mar 2006	Mar 2006	Reef slope transect	11 LAT

Station	Instrument	Deployment	Recovery	Deployment Type	Depth (m)
TOTI_1	SEABIRD, WAVE TIDE RECORDER - SBE26, serial no. 1091	Dec 2005	Mar 2006	Transect	2.7 LAT
TOTI_2	SEABIRD, TEMPERATURE RECORDER - SBE39, serial no. 3070	Dec 2005	Mar 2006	Transect	1 LAT

(b) Lady Musgrave

Station	Instrument	Deployment	Recovery	Deployment Type	Depth (m)
LM1_1	SEABIRD, TEMPERATURE RECORDER - SBE39, serial no. 0925	Dec 2005	Mar 2006	Mooring	46.1
LM1_2	RDI, ADCP - WORKHORSE, serial no. 3228	Dec 2005	Mar 2006	Mooring	41.1
LM1_3	SEABIRD, CONDUCTIVITY TEMPERATURE LOGGER - SBE16, serial no. 2126	Dec 2005	Mar 2006	Mooring	9.1
LM2_1	SEABIRD, TEMPERATURE RECORDER - SBE39, serial no. 1521	Dec 2005	Mar 2006	Mooring	41.7
LM2_2	INTEROCEAN, CURRENT METER - S4, serial no. 54615	Dec 2005	Mar 2006	Mooring	24.7
LMT_1	SEABIRD, TEMPERATURE RECORDER - SBE39, serial no. 0924	Dec 2005	Mar 2006	Transect	12.3 LAT
LMT_2	SEABIRD, TEMPERATURE RECORDER - SBE39, serial no. 3069	Dec 2005	Mar 2006	Transect	7.3 LAT
LMT_3	SEABIRD, WAVE TIDE RECORDER - SBE26, serial no. 1092	Dec 2005	Mar 2006	Transect	2.8 LAT
LMT_4	SEABIRD, TEMPERATURE RECORDER - SBE39, serial no. 1057	Dec 2005	Mar 2006	Transect	0.6 LAT

(c) Cross-shelf transect

Station	Instrument	Deployment	Recovery	Deployment Type	Depth (m)
M0	NORTEK, ADCP - CONTINENTAL, serial no. 6033	Dec 2005	Mar 2006	Mooring	189
M1_1	RDI, ADCP - WORKHORSE, serial no. 584	Mar 2005	Dec 2005	Mooring	117
M1_1	RDI, ADCP - WORKHORSE, serial no. 584	Dec 2005	Mar 2006	Mooring	117
M1_1	SEABIRD, TEMPERATURE RECORDER - SBE39, serial no. 1519	Mar 2006		Mooring	90
M1_2	RDI, ADCP - WORKHORSE, serial no. 584	Mar 2006		Mooring	85
M1_2	SEABIRD, CONDUCTIVITY TEMPERATURE LOGGER - SBE16, serial no. 2125	Dec 2005	Mar 2006	Mooring	117
M1_2	SEABIRD, TEMPERATURE RECORDER - SBE39, serial no. 1052	Mar 2005	Dec 2005	Mooring	54.4 LAT
M1_3	SEABIRD, TEMPERATURE RECORDER - SBE39, serial no. 0929	Mar 2006		Mooring	40
M1_3	SEABIRD, TEMPERATURE RECORDER - SBE39, serial no. 0929	Dec 2005	Mar 2006	Mooring	57
M1_3	SEABIRD, TEMPERATURE RECORDER - SBE39, serial no. 1059	Mar 2005	Dec 2005	Mooring	40
M1_4	SEABIRD, TEMPERATURE RECORDER - SBE39, serial no. 0921	Mar 2006		Mooring	30
M1_4	SEABIRD, TEMPERATURE RECORDER - SBE39, serial no. 0921	Dec 2005	Mar 2006	Mooring	47
M1_4	SEABIRD, TEMPERATURE RECORDER - SBE39, serial no. 1053	Mar 2005	Dec 2005	Mooring	28.5
M1_5	SEABIRD, TEMPERATURE RECORDER - SBE39, serial no. 0925	Mar 2005	Dec 2005	Mooring	18.4 LAT
M1_5	SEABIRD, TEMPERATURE RECORDER - SBE39, serial no. 1062	Mar 2006		Mooring	20
M1_5	SEABIRD, TEMPERATURE RECORDER - SBE39, serial no. 1062	Dec 2005	Mar 2006	Mooring	20
M1_6	SEABIRD, CONDUCTIVITY TEMPERATURE LOGGER - SBE16, serial no. 2123	Dec 2005	Mar 2006	Mooring	10
M1_6	SEABIRD, TEMPERATURE RECORDER - SBE39, serial no. 0917	Mar 2006		Mooring	10
M1_6	SEABIRD, TEMPERATURE RECORDER - SBE39, serial no. 1062	Mar 2005	Dec 2005	Mooring	8.5 LAT

Station	Instrument	Deployment	Recovery	Deployment Type	Depth (m)
M11	RDI, ADCP - WORKHORSE, serial no. 584	Apr 2004	Mar 2005	Mooring	104
M12	SEABIRD, TEMPERATURE RECORDER - SBE39, serial no. 0925	Apr 2004	Mar 2005	Mooring	57
M13	SEABIRD, TEMPERATURE RECORDER - SBE39, serial no. 1062	Apr 2004	Mar 2005	Mooring	8.7 LAT
M2_1	RDI, ADCP - WORKHORSE, serial no. 6658	Dec 2005	Mar 2006	Mooring	16.9 LAT
M2_2	SEABIRD, TEMPERATURE RECORDER - SBE39, serial no. 1514	Dec 2005	Mar 2006	Mooring	5.5 LAT
M3_1	RDI, ADCP - WORKHORSE, serial no. 1673	Mar 2006		Mooring	35.2
M3_1	RDI, ADCP - WORKHORSE, serial no. 1673	Mar 2006		Mooring	36 LAT
M3_1	RDI, ADCP - WORKHORSE, serial no. 1673	Dec 2005	Mar 2006	Mooring	35
M3_1	SEABIRD, TEMPERATURE RECORDER - SBE39, serial no. 0923	Mar 2005	Dec 2005	Mooring	36
M3_2	RDI, ADCP - WORKHORSE, serial no. 1673	Mar 2005	Dec 2005	Mooring	36
M3_2	SEABIRD, CONDUCTIVITY TEMPERATURE LOGGER - SBE16, serial no. 2124	Dec 2005	Mar 2006	Mooring	35
M3_2	SEABIRD, TEMPERATURE RECORDER - SBE39, serial no. 0923	Mar 2006		Mooring	20 LAT
M3_3	SEABIRD, TEMPERATURE RECORDER - SBE39, serial no. 0921	Mar 2005	Dec 2005	Mooring	20
M3_3	SEABIRD, TEMPERATURE RECORDER - SBE39, serial no. 0923	Dec 2005	Mar 2006	Mooring	18.7 LAT
M3_3	SEABIRD, TEMPERATURE RECORDER - SBE39, serial no. 1059	Mar 2006		Mooring	10 LAT
M3_4	SEABIRD, TEMPERATURE RECORDER - SBE39, serial no. 0932	Mar 2006		Mooring	5 LAT
M3_4	SEABIRD, TEMPERATURE RECORDER - SBE39, serial no. 1059	Dec 2005	Mar 2006	Mooring	9
M3_4	SEABIRD, TEMPERATURE RECORDER - SBE39, serial no. 1060	Mar 2005	Dec 2005	Mooring	8.6 LAT
M3_5	SEABIRD, TEMPERATURE RECORDER - SBE39, serial no. 0932	Mar 2005	Dec 2005	Mooring	4.6 LAT
M3_5	SEABIRD, TEMPERATURE RECORDER - SBE39, serial no. 0932	Dec 2005	Mar 2006	Mooring	3.7 LAT
M31	RDI, ADCP - WORKHORSE, serial no. 1673	Apr 2004	Mar 2005	Mooring	34 LAT

Station	Instrument	Deployment	Recovery	Deployment Type	Depth (m)
M32	SEABIRD, TEMPERATURE RECORDER - SBE39, serial no. 1059	Apr 2004	Mar 2005	Mooring	4 LAT
MB_1	NORTEK, ADCP - AQUAPRO, serial no. 1705	Dec 2005	Mar 2006	Weather Station Mooring	7.5 LAT
MB_2	SEABIRD, TEMPERATURE RECORDER - SBE39, serial no. 1523	Dec 2005	Mar 2006	Weather Station Mooring	3.3 LAT
MB_3	SEABIRD, TEMPERATURE RECORDER - SBE39, serial no. 1056	Dec 2005	Mar 2006	Weather Station Mooring	0.6
METOC BUOY	CAMPBELL SCIENTIFIC, WEATHER STATION, serial no. WX STA 02	Dec 2005	Mar 2006	Mooring	
RCS_M 4_1	INTEROCEAN, CURRENT METER - S4, serial no. 54058	Dec 2005	Mar 2006	S4 Tripod	11.6 LAT
RCS_M 4_2	SEABIRD, TEMPERATURE RECORDER - SBE39, serial no. 0760	Dec 2005	Mar 2006	S4 Tripod	11.6 LAT
TMH_1	SEABIRD, TEMPERATURE RECORDER - SBE39, serial no. 0926	Dec 2005	Mar 2006	Transect	12.1 LAT
TMH_2	SEABIRD, TEMPERATURE RECORDER - SBE39, serial no. 1053	Dec 2005	Mar 2006	Transect	8 LAT
TMH_3	SEABIRD, CONDUCTIVITY TEMPERATURE LOGGER - SBE16, serial no. 2127	Dec 2005	Mar 2006	Transect	3.1 LAT
TMH_4	SEABIRD, TEMPERATURE RECORDER - SBE39, serial no. 0935	Dec 2005	Mar 2006	Transect	0.2 LAT

Table 5: Instrument deployments organized by instrument types**(a) Tide gauges**

Station	Instrument	Deployment	Recovery	Deployment Type	Depth (m)
T7_2	AIMS WORKSHOP, TG, serial no. 17	Apr 2004	Mar 2005	Tide Gauge - Reef slope transect	10.5 LAT
T7_TG	BRANCKER, TEMPERATURE PRESSURE RECORDER - XR-420-TG, serial no. 10092	Mar 2005	Dec 2005	Transect	10.5 LAT
T7_TG	BRANCKER, TEMPERATURE PRESSURE RECORDER - XR-420-TG, serial no. 10092	Dec 2005	Mar 2006	Reef slope transect	10.5 LAT

(b) Weather stations

Station	Instrument	Deployment	Recovery	Deployment Type	Depth (m)
METOC BUOY	CAMPBELL SCIENTIFIC, WEATHER STATION, serial no. WX STA 02	Dec 2005	Mar 2006	Mooring	0

(d) Current meters

Station	Instrument	Deployment	Recovery	Deployment Type	Depth (m)
C9	INTEROCEAN, CURRENT METER - S4, serial no. 54564	Apr 2004	Mar 2005	Transect	1.6 LAT
C9	INTEROCEAN, CURRENT METER - S4, serial no. 54615	Mar 2005	Dec 2005	Transect	1.6 LAT
C9	INTEROCEAN, CURRENT METER - S4, serial no. 54837	Dec 2005	Mar 2006	S4 Tripod	1.6 LAT
LM2_2	INTEROCEAN, CURRENT METER - S4, serial no. 54615	Dec 2005	Mar 2006	Mooring	24.7 LAT
RCS_M4_1	INTEROCEAN, CURRENT METER - S4, serial no. 54058	Dec 2005	Mar 2006	S4 Tripod	11.6 LAT
HIC	NORTEK, STREAM FLOW LOGGER - EASY Q, serial no. 0860	Dec 2005	Mar 2006	Stationary Transect	2.2 LAT

(e) Temperature recorders

Station	Instrument	Deployment	Recovery	Deployment Type	Depth (m)
C9T	SEABIRD, TEMPERATURE RECORDER - SBE39, serial no. 0759	Mar 2005	Mar 2006	Transect	1.6 LAT
LM1_1	SEABIRD, TEMPERATURE RECORDER - SBE39, serial no. 0925	Dec 2005	Mar 2006	Mooring	46.1
LM2_1	SEABIRD, TEMPERATURE RECORDER - SBE39, serial no. 1521	Dec 2005	Mar 2006	Mooring	41.7
LMT_1	SEABIRD, TEMPERATURE RECORDER - SBE39, serial no. 0924	Dec 2005	Mar 2006	Transect	12.3 LAT

Station	Instrument	Deployment	Recovery	Deployment Type	Depth (m)
LMT_2	SEABIRD, TEMPERATURE RECORDER - SBE39, serial no. 3069	Dec 2005	Mar 2006	Transect	7.2 LAT
LMT_4	SEABIRD, TEMPERATURE RECORDER - SBE39, serial no. 1057	Dec 2005	Mar 2006	Transect	0.6 LAT
M1_1	SEABIRD, TEMPERATURE RECORDER - SBE39, serial no. 1519	Mar 2006		Mooring	90
M1_2	SEABIRD, TEMPERATURE RECORDER - SBE39, serial no. 1052	Mar 2005	Dec 2005	Mooring	54.4 LAT
M1_3	SEABIRD, TEMPERATURE RECORDER - SBE39, serial no. 0929	Mar 2006		Mooring	40
M1_3	SEABIRD, TEMPERATURE RECORDER - SBE39, serial no. 0929	Dec 2005	Mar 2006	Mooring	57
M1_3	SEABIRD, TEMPERATURE RECORDER - SBE39, serial no. 1059	Mar 2005	Dec 2005	Mooring	40
M1_4	SEABIRD, TEMPERATURE RECORDER - SBE39, serial no. 0921	Mar 2006		Mooring	30
M1_4	SEABIRD, TEMPERATURE RECORDER - SBE39, serial no. 0921	Dec 2005	Mar 2006	Mooring	47
M1_4	SEABIRD, TEMPERATURE RECORDER - SBE39, serial no. 1053	Mar 2005	Dec 2005	Mooring	28.5
M1_5	SEABIRD, TEMPERATURE RECORDER - SBE39, serial no. 0925	Mar 2005	Dec 2005	Mooring	18.4 LAT
M1_5	SEABIRD, TEMPERATURE RECORDER - SBE39, serial no. 1062	Mar 2006		Mooring	20
M1_5	SEABIRD, TEMPERATURE RECORDER - SBE39, serial no. 1062	Dec 2005	Mar 2006	Mooring	20
M1_6	SEABIRD, TEMPERATURE RECORDER - SBE39, serial no. 0917	Mar 2006		Mooring	10
M1_6	SEABIRD, TEMPERATURE RECORDER - SBE39, serial no. 1062	Mar 2005	Dec 2005	Mooring	8.5 LAT
M12	SEABIRD, TEMPERATURE RECORDER - SBE39, serial no. 0925	Apr 2004	Mar 2005	Mooring	57
M13	SEABIRD, TEMPERATURE RECORDER - SBE39, serial no. 1062	Apr 2004	Mar 2005	Mooring	8.7 LAT
M2_2	SEABIRD, TEMPERATURE RECORDER - SBE39, serial no. 1514	Dec 2005	Mar 2006	Mooring	5.5 LAT
M3_1	SEABIRD, TEMPERATURE RECORDER - SBE39, serial no. 0923	Mar 2005	Dec 2005	Mooring	36

Station	Instrument	Deployment	Recovery	Deployment Type	Depth (m)
M3_2	SEABIRD, TEMPERATURE RECORDER - SBE39, serial no. 0923	Mar 2006		Mooring	20 LAT
M3_3	SEABIRD, TEMPERATURE RECORDER - SBE39, serial no. 0921	Mar 2005	Dec 2005	Mooring	20
M3_3	SEABIRD, TEMPERATURE RECORDER - SBE39, serial no. 0923	Dec 2005	Mar 2006	Mooring	18.7 LAT
M3_3	SEABIRD, TEMPERATURE RECORDER - SBE39, serial no. 1059	Mar 2006		Mooring	10 LAT
M3_4	SEABIRD, TEMPERATURE RECORDER - SBE39, serial no. 0932	Mar 2006		Mooring	5 LAT
M3_4	SEABIRD, TEMPERATURE RECORDER - SBE39, serial no. 1059	Dec 2005	Mar 2006	Mooring	9
M3_4	SEABIRD, TEMPERATURE RECORDER - SBE39, serial no. 1060	Mar 2005	Dec 2005	Mooring	8.6 LAT
M3_5	SEABIRD, TEMPERATURE RECORDER - SBE39, serial no. 0932	Mar 2005	Dec 2005	Mooring	4.6 LAT
M3_5	SEABIRD, TEMPERATURE RECORDER - SBE39, serial no. 0932	Dec 2005	Mar 2006	Mooring	3.7 LAT
M32	SEABIRD, TEMPERATURE RECORDER - SBE39, serial no. 1059	Apr 2004	Mar 2005	Mooring	4 LAT
MB_2	SEABIRD, TEMPERATURE RECORDER - SBE39, serial no. 1523	Dec 2005	Mar 2006	Weather Station Mooring	3.3 LAT
MB_3	SEABIRD, TEMPERATURE RECORDER - SBE39, serial no. 1056	Dec 2005	Mar 2006	Weather Station Mooring	0.6
RCS_M4_2	SEABIRD, TEMPERATURE RECORDER - SBE39, serial no. 0760	Dec 2005	Mar 2006	S4 Tripod	11.6 LAT
T10_1	SEABIRD, TEMPERATURE RECORDER - SBE39, serial no. 0676	Mar 2005	Mar 2006	Temperature transect	13.8 LAT
T10_1	SEABIRD, TEMPERATURE RECORDER - SBE39, serial no. 0927	Apr 2004	Mar 2005	Temperature transect	13.5 LAT
T10_2	SEABIRD, TEMPERATURE RECORDER - SBE39, serial no. 0760	Mar 2005	Dec 2005	Temperature transect	8.9 LAT
T10_2	SEABIRD, TEMPERATURE RECORDER - SBE39, serial no. 0921	Apr 2004	Mar 2005	Temperature transect	8.4 LAT
T10_3	SEABIRD, TEMPERATURE RECORDER - SBE39, serial no. 0932	Apr 2004	Mar 2005	Temperature transect	3.5 LAT
T10_3	SEABIRD, TEMPERATURE RECORDER - SBE39, serial no. 1522	Mar 2005	Mar 2006	Temperature transect	4 LAT

Station	Instrument	Deployment	Recovery	Deployment Type	Depth (m)
T10_4	SEABIRD, TEMPERATURE RECORDER - SBE39, serial no. 0926	Mar 2005	Dec 2005	Temperature transect	1.9 LAT
T10_4	SEABIRD, TEMPERATURE RECORDER - SBE39, serial no. 1060	Apr 2004	Mar 2005	Temperature transect	0.9 LAT
T10_5	SEABIRD, TEMPERATURE RECORDER - SBE39, serial no. 0923	Apr 2004	Mar 2005	Temperature transect	-0.7 LAT
T10_5	SEABIRD, TEMPERATURE RECORDER - SBE39, serial no. 1518	Mar 2005	Mar 2006	Temperature transect	0 LAT
T11_1	SEABIRD, TEMPERATURE RECORDER - SBE39, serial no. 0917	Mar 2005	Mar 2006	Temperature transect	15.3 LAT
T11_2	SEABIRD, TEMPERATURE RECORDER - SBE39, serial no. 0934	Mar 2005	Mar 2006	Temperature transect	9.9 LAT
T11_3	SEABIRD, TEMPERATURE RECORDER - SBE39, serial no. 0930	Mar 2005	Mar 2006	Temperature transect	4.9 LAT
T11_4	SEABIRD, TEMPERATURE RECORDER - SBE39, serial no. 0935	Mar 2005	Dec 2005	Temperature transect	2.2 LAT
T11_5	SEABIRD, TEMPERATURE RECORDER - SBE39, serial no. 1519	Mar 2005	Mar 2006	Temperature transect	0.9 LAT
T7_1	SEABIRD, TEMPERATURE RECORDER - SBE39, serial no. 1051	Dec 2005	Mar 2006	Temperature transect	14.9 LAT
T7_1	SEABIRD, TEMPERATURE RECORDER - SBE39, serial no. 1053	Apr 2004	Mar 2005	Temperature transect	15.1 LAT
T7_2	SEABIRD, TEMPERATURE RECORDER - SBE39, serial no. 1058	Apr 2004	Mar 2005	Temperature transect	10.5 LAT
T7_2	SEABIRD, TEMPERATURE RECORDER - SBE39, serial no. 1514	Mar 2005	Dec 2005	Temperature transect	15.1 LAT
T7_3	SEABIRD, TEMPERATURE RECORDER - SBE39, serial no. 0920	Mar 2005	Mar 2006	Temperature transect	5.3 LAT
T7_3	SEABIRD, TEMPERATURE RECORDER - SBE39, serial no. 1052	Apr 2004	Mar 2005	Temperature transect	5.3 LAT
T7_4	SEABIRD, TEMPERATURE RECORDER - SBE39, serial no. 0922	Apr 2004	Mar 2005	Temperature transect	2.4 LAT
T7_4	SEABIRD, TEMPERATURE RECORDER - SBE39, serial no. 0929	Mar 2005	Dec 2005	Temperature transect	2.4 LAT
T7_5	SEABIRD, TEMPERATURE RECORDER - SBE39, serial no. 0675	Mar 2005	3976	Temperature transect	1.4 LAT
T7_5	SEABIRD, TEMPERATURE RECORDER - SBE39, serial no. 1054	Apr 2004	Mar 2005	Temperature transect	1.4 LAT

Station	Instrument	Deployment	Recovery	Deployment Type	Depth (m)
T7_SURF BUOY	SEABIRD, TEMPERATURE RECORDER - SBE39, serial no. 1052	Dec 2005	Mar 2006	Transect	0
T9_1	SEABIRD, TEMPERATURE RECORDER - SBE39, serial no. 0732	Apr 2004	Mar 2005	Temperature transect	-0.5 LAT
T9_2	SEABIRD, TEMPERATURE RECORDER - SBE39, serial no. 0918	Apr 2004	Mar 2005	Temperature transect	2.1 LAT
T9_3	SEABIRD, TEMPERATURE RECORDER - SBE39, serial no. 0931	Apr 2004	Mar 2005	Temperature transect	-0.2 LAT
T9_4	SEABIRD, TEMPERATURE RECORDER - SBE39, serial no. 1061	Apr 2004	Mar 2005	Temperature transect	-0.3 LAT
T9_5	SEABIRD, TEMPERATURE RECORDER - SBE39, serial no. 1051	Apr 2004	Mar 2005	Temperature transect	11 LAT
T90	SEABIRD, TEMPERATURE RECORDER - SBE39, serial no. 1525	Dec 2005	Mar 2006	Surface Buoy	
T91	SEABIRD, TEMPERATURE RECORDER - SBE39, serial no. 0922	Mar 2005	Mar 2006	Temperature transect	-0.5 LAT
T92	SEABIRD, TEMPERATURE RECORDER - SBE39, serial no. 1058	Mar 2005	Mar 2006	Temperature transect	2.1 LAT
T93	SEABIRD, TEMPERATURE RECORDER - SBE39, serial no. 0927	Mar 2005	Mar 2006	Temperature transect	-0.2 LAT
T93_SB	SEABIRD, TEMPERATURE RECORDER - SBE39, serial no. 1524	Dec 2005	Mar 2006	Surface Buoy	
T94	SEABIRD, TEMPERATURE RECORDER - SBE39, serial no. 1520	Mar 2005	Mar 2006	Temperature transect	-0.3 LAT
T95	SEABIRD, TEMPERATURE RECORDER - SBE39, serial no. 1521	Mar 2005	Dec 2005	Temperature transect	11 LAT
T9N_1	SEABIRD, TEMPERATURE RECORDER - SBE39, serial no. 0732	Mar 2005	Mar 2006	Temperature transect	9.9 LAT
T9N_2	SEABIRD, TEMPERATURE RECORDER - SBE39, serial no. 0931	Mar 2005	Mar 2006	Temperature transect	4.9 LAT
T9N_3	SEABIRD, TEMPERATURE RECORDER - SBE39, serial no. 0918	Mar 2005	Mar 2006	Temperature transect	1.9 LAT
T9N_4	SEABIRD, TEMPERATURE RECORDER - SBE39, serial no. 1061	Mar 2005	Mar 2006	Temperature transect	0.9 LAT
TMH_1	SEABIRD, TEMPERATURE RECORDER - SBE39, serial no. 0926	Dec 2005	Mar 2006	Transect	12.1 LAT
TMH_2	SEABIRD, TEMPERATURE RECORDER - SBE39, serial no. 1053	Dec 2005	Mar 2006	Transect	8 LAT

Station	Instrument	Deployment	Recovery	Deployment Type	Depth (m)
TMH_4	SEABIRD, TEMPERATURE RECORDER - SBE39, serial no. 0935	Dec 2005	Mar 2006	Transect	0.2 LAT
TOTI_2	SEABIRD, TEMPERATURE RECORDER - SBE39, serial no. 3070	Dec 2005	Mar 2006	Transect	1 LAT

(e) Wave/tide recorders

Station	Instrument	Deployment	Recovery	Deployment Type	Depth (m)
LMT_3	SEABIRD, WAVE TIDE RECORDER - SBE26, serial no. 1092	Dec 2005	Mar 2006	Transect	2.8 LAT
T9_SB26	SEABIRD, WAVE TIDE RECORDER - SBE26, serial no. 1009	Dec 2005	Mar 2006	Transect	3.6 LAT
TOTI_1	SEABIRD, WAVE TIDE RECORDER - SBE26, serial no. 1091	Dec 2005	Mar 2006	Transect	2.7 LAT

(f) Temperature salinity recorder

Station	Instrument	Deployment	Recovery	Deployment Type	Depth (m)
LM1_3	SEABIRD, CONDUCTIVITY TEMPERATURE LOGGER - SBE16, serial no. 2126	Dec 2005	Mar 2006	Mooring	9.1
M1_2	SEABIRD, CONDUCTIVITY TEMPERATURE LOGGER - SBE16, serial no. 2125	Dec 2005	Mar 2006	Mooring	117
M1_6	SEABIRD, CONDUCTIVITY TEMPERATURE LOGGER - SBE16, serial no. 2123	Dec 2005	Mar 2006	Mooring	10
M3_2	SEABIRD, CONDUCTIVITY TEMPERATURE LOGGER - SBE16, serial no. 2124	Dec 2005	Mar 2006	Mooring	35
TMH_3	SEABIRD, CONDUCTIVITY TEMPERATURE LOGGER - SBE16, serial no. 2127	Dec 2005	Mar 2006	Transect	3.1 LAT

(g) Wave/current profilers

Station	Instrument	Deployment	Recovery	Deployment Type	Depth (m)
T9_AWAC	NORTEK, AWAC, serial no. 5130	Dec 2005	Mar 2006	Transect	11.9 LAT

(h) Acoustic Doppler Current Profiler (ADCP)

Station	Instrument	Deployment	Recovery	Deployment Type	Depth (m)
T7_NOR	NORTEK - AQUAPRO, serial no. 1634	Dec 2005	Mar 2006	Steel Picket Mooring	14 LAT
T7_NOR	NORTEK - AQUAPRO, serial no. 1356	Mar 2005	Dec 2005	Steel Picket Mooring	14.1 LAT
MB_1	NORTEK - AQUAPRO, serial no. 1705	Dec 2005	Mar 2006	Weather Station Mooring	7.5 LAT
M0	NORTEK - CONTINENTAL, serial no. 6033	Dec 2005	Mar 2006	Mooring	189
M3_1	RDI - WORKHORSE, serial no. 1673	Mar 2006		Mooring	35.2
M3_1	RDI - WORKHORSE, serial no. 1673	Mar 2006		Mooring	36 LAT
M3_1	RDI - WORKHORSE, serial no. 1673	Dec 2005	Mar 2006	Mooring	35
M3_2	RDI - WORKHORSE, serial no. 1673	Mar 2005	Dec 2005	Mooring	36
M31	RDI - WORKHORSE, serial no. 1673	Apr 2004	Mar 2005	Mooring	34 LAT
LM1_2	RDI - WORKHORSE, serial no. 3228	Dec 2005	Mar 2006	Mooring	41.1
M1_1	RDI - WORKHORSE, serial no. 584	Mar 2005	Dec 2005	Mooring	117
M1_1	RDI - WORKHORSE, serial no. 584	Dec 2005	Mar 2006	Mooring	117
M1_2	RDI - WORKHORSE, serial no. 584	Mar 2006		Mooring	85
M11	RDI - WORKHORSE, serial no. 584	Apr 2004	Mar 2005	Mooring	104
CC	RDI - WORKHORSE, serial no. 6372	Dec 2005	Mar 2006	Mooring	43.2
M2_1	RDI - WORKHORSE, serial no. 6658	Dec 2005	Mar 2006	Mooring	16.9 LAT
T9N_ADC P	RDI - WORKHORSE, serial no. 974	Mar 2006	Mar 2006	Reef slope transect	11 LAT