

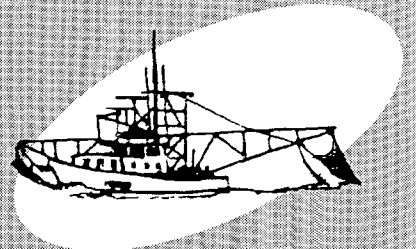
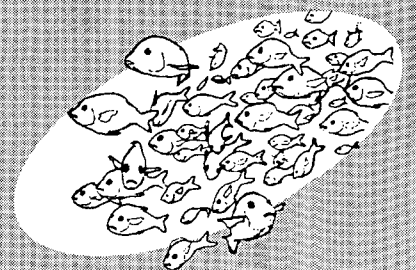
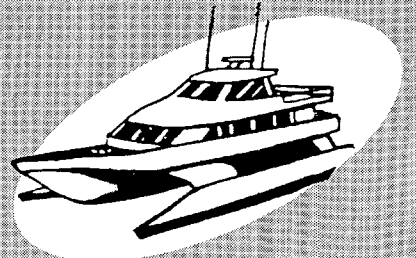
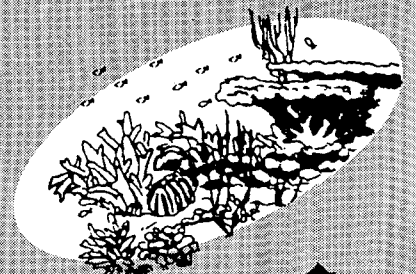
CRC REEF RESEARCH

TECHNICAL REPORT

Distribution of Seagrasses in the Lizard Island Group- a reconnaissance survey, October 1995

L.J. McKenzie, W.J. Lee Long & E.J. Bradshaw

Department of Primary Industries
Northern Fisheries Centre
PO Box 5396, Cairns, Q 4870



Project Funded by the CRC Reef Research Centre

This project is part sponsored by the Environment Management Charge
(EMC) paid by operators in the Great Barrier Reef Marine Park

CRC REEF RESEARCH TECHNICAL REPORT

**Distribution of Seagrasses in the
Lizard Island Group -
a reconnaissance survey,
October 1995.**

L.J. McKenzie, W.J. Lee Long and E.J. Bradshaw

Queensland Department of Primary Industries
Northern Fisheries Centre
PO Box 5396, Cairns, QLD 4870

A report funded by the CRC Reef Research Centre.

The CRC Reef Research Centre was established under the Australian Government's Cooperative Research Centre Program.

The Centre, established in 1993, undertakes an integrated program of applied research and development, training and education, aimed at increasing opportunities for ecologically sustainable development of the Great Barrier Reef and providing an improved scientific basis for Reef management and regulatory decision making.

CRC Reef Research Centre
c/- James Cook University
TOWNSVILLE QLD 4811
Phone: (077) 81 4976
Fax: (077) 81 4099
Email: crc.reef@jcu.edu.au

©Cooperative Research Centre for Ecologically Sustainable Development of the Great Barrier Reef

National Library of Australia Cataloguing-in-Publication Entry

McKenzie, L.J.

Distribution of seagrasses in the Lizard Island Group - a reconnaissance survey, October 1995.

Bibliography.

Includes index.

ISBN 1 876054 14 X

1. Seagrasses - Queensland - Lizard Island - Geographical Distribution. 2. Bradshaw, E.J. II. Lee Long, W.J. III.. Cooperative Research Centre for Ecologically Sustainable Development of the Great Barrier Reef (Australia). III. Title. (Series: CRC Reef Research technical report; 14).

This publication should be cited as:

McKenzie, L.J., Lee Long, W.J. & Bradshaw, E.J. (1997)

Distribution of seagrasses in the Lizard Island Group - a reconnaissance survey, October 1995.

CRC Reef Research Centre

Technical Report No. 14

Townsville; CRC Reef Research Centre, 26 pp.

This work is copyright. The Copyright Act 1968 permits fair dealing for study, research, news reporting, criticism or review. Selected passages, tables and diagrams may be reproduced for such purposes provided acknowledgment of the source is included. Major extracts of the entire document may not be reproduced by any process without written permission of the Director, CRC Reef Research Centre.

Published by the Cooperative Research Centre for Ecologically Sustainable Development of the Great Barrier Reef.

Further copies may be obtained from CRC Reef Research Centre, c/- James Cook University Port Office, Townsville, QLD 4811.

Printed by DPI Northern Fisheries Centre, Cairns.

Table of Contents

TABLE OF CONTENTS	i
LIST OF FIGURES & TABLES	ii
EXECUTIVE SUMMARY	iii
<i>Key Results</i>	iii
<i>Key Issues</i>	iii
TECHNICAL REPORT	1
Introduction & General Seagrass Ecology	1
Materials & Methods.....	2
<i>Site description</i>	2
<i>Survey Methods</i>	2
<i>Geographic Information System</i>	2
Results.....	5
<i>Seagrass species and distribution</i>	5
<i>Seagrass depth distribution</i>	10
<i>Algae</i>	12
<i>Dugongs</i>	12
Discussion	14
Acknowledgments	15
References.....	15
Appendix 1.....	18

List of Figures, Plates & Tables

Figure 1.	<i>Location of Lizard Island Group study area</i>	3
Figure 2.	<i>Location of survey sites in the Lizard Island group survey area</i>	4
Figure 3.	<i>Location of seagrass meadows around the Lizard Island group survey area</i> <i>- October 1995</i>	7
Figure 4.	<i>Distribution of seagrass meadows in Watson's Bay and on the reef-flat near</i> <i>the blue lagoon</i>	8
Figure 5.	<i>Biomass for each species of seagrass surveyed in the Lizard Island Group</i> <i>survey area - October 1995</i>	9
Figure 6.	<i>Means, standard errors and ranges of recorded depth (below MSL) of</i> <i>occurrence for seagrasses in waters <21 m in the Lizard Island Group</i> <i>survey area</i>	11
Figure 7.	<i>Location of dugong and dugong feeding trails sighted in the Lizard Island</i> <i>Group survey area - October 1995</i>	13
Plate 1.	<i>Halophila habitat on reef flat</i>	5
Plate 2.	<i>Subtidal Halophila habitat</i>	6
Plate 3.	<i>Hairs on adaxial side of Halophila sp.</i>	6
Plate 4.	<i>Female flowers of Halophila sp.</i>	10
Plate 5.	<i>Male flower of Halophila sp. releasing pollen</i>	10
Plate 6.	<i>Habitat of blue-green filamentous algae on the reef-flat</i>	12
Plate 7.	<i>Dugong feeding trails at Mangrove Beach, Lizard Island</i>	13
Plate 8.	<i>Cymodocea serrulata</i>	19
Plate 9.	<i>Halodule uninervis</i>	20
Plate 10.	<i>Halophila ovalis (shallow)</i>	21
Plate 11.	<i>Halophila ovalis (deep)</i>	22
Plate 12.	<i>Halophila sp.</i>	23
Plate 13.	<i>Halophila spinulosa</i>	24
Plate 14.	<i>Syringodium isoetifolium</i>	25
Plate 15.	<i>Thalassia hemprichii</i>	26
Table 1.	<i>Mapping quality for seagrass meadow boundaries mapped in the Lizard</i> <i>Island Group</i>	5
Table 2.	<i>Description of seagrass habitats in the Lizard Island survey area - October</i> <i>1995</i>	6
Table 3.	<i>Algal groups present in Lizard Island survey area</i>	12

Executive Summary

Key Results

1. 292 ± 78 ha of seagrass habitat was mapped in the survey of intertidal and sub-tidal areas surrounding the Lizard Island Group in October 1995.
2. Seven seagrass species (1 previously undescribed) from two Families, were recorded in the survey area. *Thalassia hemprichii* was the most commonly encountered species (38 % of seagrass sites), although it was restricted to the shallow reef-tops. *Halophila ovalis* was the second most commonly encountered species (36 % of seagrass sites) and was found in both intertidal and subtidal areas. Other species found in the survey area included *Halodule uninervis*, *Halophila spinulosa*, *Syringodium isoetifolium*, *Cymodocea serrulata* and *Halophila* sp.
3. *Halophila ovalis* had the widest depth distribution and occurred at both the shallowest (0.4 m below MSL) and the deepest (4.4 m below MSL) sites where seagrass was found. Mean depths of occurrence for individuals species were mostly <15 m below mean sea level.
4. A previously undescribed seagrass species, *Halophila* sp., was found in the survey area near Watson's Bay in depths >10 m below MSL. This species was similar to *Halophila capricorni* although several differences were noted. Advice is being sought to help clarify its identification.
5. Seagrass communities included *Halophila ovalis* and *Thalassia* meadows in the shallow sandy areas of the reef-flat and *Halophila* species dominated meadows in deep-water. Shallow (<3m) parts of Watson's Bay contained medium dense meadows of *Halodule uninervis* and *Halophila ovalis*.

Key Issues

1. The inventory of seagrass species from the Lizard Island Group, including the present survey, now totals 8, which is high for a Great Barrier Reef locality.
2. Anchor damage (scars) was observed in the seagrass meadows of Watson's Bay. Shallow-water (<10 m) scars showed evidence of recolonisation/recovery, however deep-water (>10 m) scars appeared recent, as there was little evidence of seagrass recovery. It is unknown whether recovery occurs at a faster rate in shallow-waters compared to deep-water meadows and further research is necessary.
3. We recommend that permanent moorings be considered for large passenger vessels using the Watson's Bay National Park Zone, if use of the site continues to increase and if the deep-water seagrass habitats are to be protected.
4. Indications from this seagrass survey are that the Watsons Bay seagrasses are already affected by vessel anchoring. Seasonally and year to year changes in seagrass distribution, abundance and species composition make assessment of such impacts difficult. Anthropogenic impacts may not manifest in the seagrasses until 6 to 12 months after the impacting event. Large scale changes may only be detected over a period of years as loss can be gradual. Investigations over long terms therefore need to be designed to detect gradual change.

↪ Introduction & General Seagrass Ecology

Seagrass meadows in northern Queensland play a critical ecological role as nursery grounds for commercial species of penaeid prawns and fish (Coles and Lee Long 1985; Coles *et al.* 1993; Watson *et al.* 1993). Seagrasses are also essential food for dugong, *Dugong dugon* (Miller), and green sea turtles, *Chelonia mydas* (Linnaeus) (Lanyon *et al.* 1989).

The growth of seagrasses depends on several factors including the availability of light (Dennison 1987; Williams and Dennison 1990), nutrients (Orth 1977; Erftemeijer 1994) and water temperature (Bulthuis 1987). Activities that lead to a change in these factors such as turbidity from dredging, and runoff from agriculture, could potentially have a negative impact on seagrass growth and distribution. Seagrasses show measurable growth responses to changes in ambient water quality and can therefore be used as effective ecological indicators of environmental impact (Dennison *et al.* 1993).

Tropical seagrass meadows vary seasonally and between years (Mellors *et al.* 1993; McKenzie 1994). The potential for widespread seagrass loss has been well documented. Causes may include natural occurrences such as cyclones and floods (Poiner *et al.* 1989) or result from human influences such as dredging (Pringle 1989), agricultural runoff (Preen *et al.* 1995), industrial runoff (Shepherd *et al.* 1989) and oil spills (Jackson *et al.* 1989). Smaller scale losses occur as a result of propeller (Zieman 1976) and anchor damage or dugong feeding activity.

The Lizard Island group is adjacent to the Starke River region, an area recognised for its sizeable dugong populations and associated seagrasses. Little is known of the seagrasses in the Lizard Island Group. Price *et al.* (1976) reported only 2 species of seagrass (*Cymodocea rotundata* and *Halophila ovata*) from the Lizard Island group in their checklist of marine benthic plants. The only other previously reported species for the group is *Thalassia hemprichii* (Nichols and Johns, 1985; Boon, 1986). Seagrasses have also been reported from inter-reef waters in the vicinity of the Lizard Island group during a deep-water survey of seagrasses (Lee Long *et al.* 1989; Coles *et al.* 1995).

The Lizard Island group is currently zoned within the Cairns Section of the Great Barrier Reef Marine Park (GBRMPA ID No 14-116) and includes a National Park Zone, Buffer, Conservation Park Zone and No Structure Subzone. Lizard Island provides one of the most protected boat anchorages near the outer-reef in the northern section of the GBR. The anchorage is especially popular in the latter months of the year during the billfish (marlin) fishing season. The island group is also popular for tourists as it is situated close to favoured SCUBA diving sites (eg. Cod Hole) and it includes a national park and a resort (Lizard Island Lodge).

This report presents the results of a reconnaissance survey conducted in October 1995. The objectives of the survey were:

- ① to map the seagrass distribution of the Lizard Island group and
- ② describe the seagrass communities present.

Materials & Methods

Site description

The Lizard Island group is located within the Great Barrier Reef lagoon approximately mid-way between the mainland coast and outer barrier reefs (145° 29.8'E, 14° 40'S) (Figure 1). The Lizard Island group refers to the 3 continental islands of Lizard (the largest), Palfrey and South Islands and associated reefs. The present seagrass reconnaissance survey was conducted on the southern (blue lagoon) and western sides of Lizard Island from Lizard Head to North Point and to a depth of 21 m below MSL (Figure 2).

Survey Methods

Seagrass distribution was surveyed between the 6 - 9 October 1995. Estimates of above-ground seagrass biomass (3 replicates of a 0.25 m²), seagrass species composition, % seagrass area cover, % cover of algae and sediment characteristics were recorded by divers at each survey site.

Above-ground biomass was determined by a "visual estimates of biomass" technique described by Mellors (1991). The technique requires each diver to rank seagrass biomass in the field. These ranks are then calibrated for each diver against a set of harvested quadrats to calculate above-ground biomass estimates in grams dry weight per square metre of substrate (g DW. m⁻²).

Seagrass species were identified according to Kuo and McComb (1989). Voucher specimens of each seagrass species were collected (GBRMPA Permit # G95/487) for later verification if necessary. Sediment characteristics were described using visual estimates of grain size: shell grit, rock gravel (>2000µm), coarse sand (>500 µm), sand (>250 µm), fine sand (>63 µm) and mud (<63 µm). A global positioning system (GPS) was used to locate each survey site. A depth gauge was used to measure water depth and these depths were converted to depths below mean sea level (MSL) by reference to tide tables.

Geographic Information System

All data was entered onto a Geographic Information System (GIS). A new base-map for the Lizard Island group was created from a rectified 1:30,000 aerial photograph (23 November 1995, height 4580 m) and control points (courtesy QDoE). All maps and GIS outputs were produced using Australian Map Grid (AMG) Zone 55 projection.

Boundaries of seagrass meadows were determined based on the positions of survey sites, depth contours (courtesy Sunmap), and on information from aerial photograph interpretation. Errors which should be considered when interpreting GIS maps include those associated with digitising and rectifying the aerial photograph onto the basemap and GPS fixes for survey sites. The error from the position of diver relative to the GPS receiver was assumed to be embedded within this range.

Each seagrass meadow was assigned a meadow boundary quality value based on the type and range of mapping information available for each area and determined by the distance between survey sites and GPS position fixing error (Table 1). These meadow boundary "error" values were used to estimate the likely range of area for each meadow mapped.

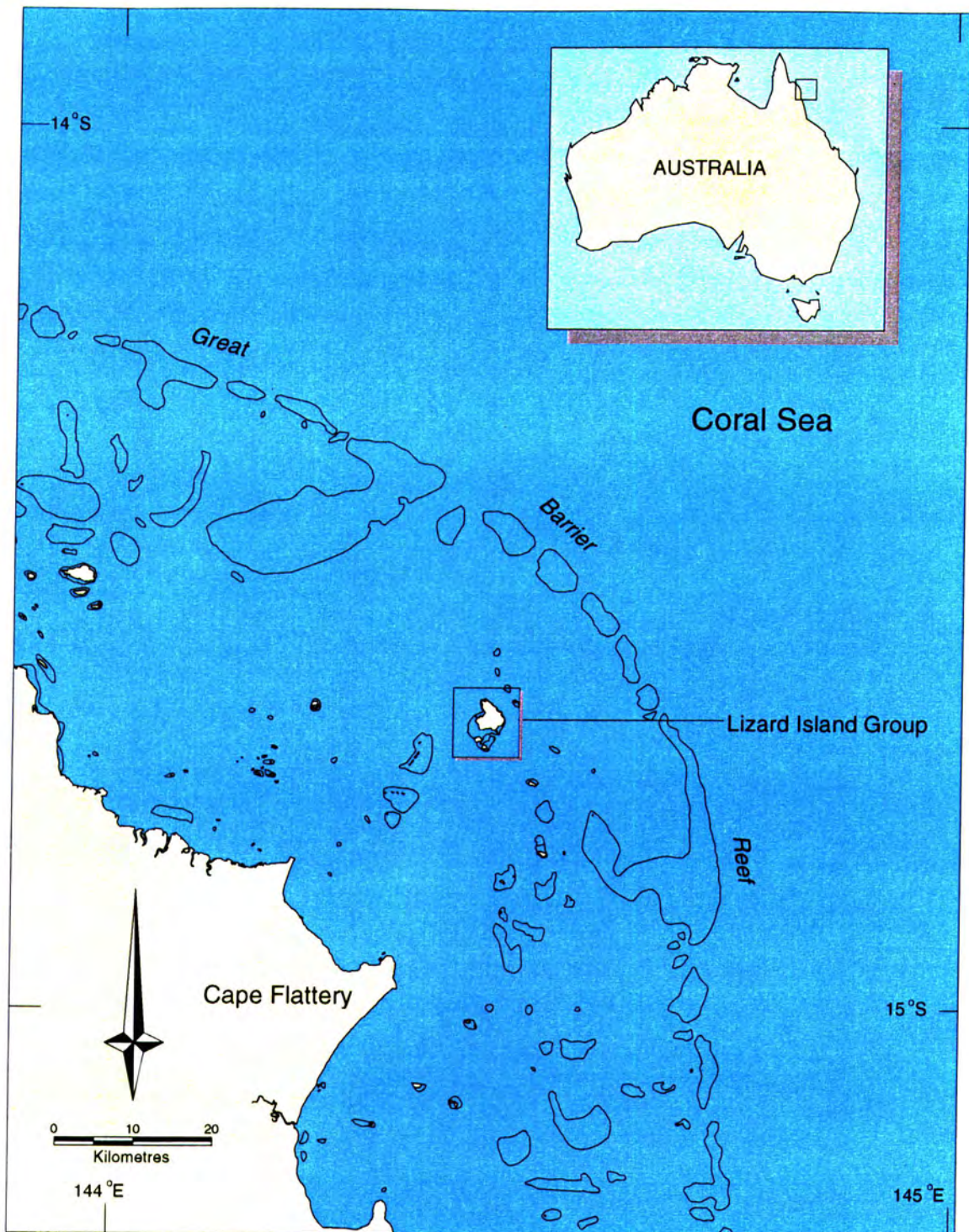


Figure 1. Location of Lizard Island Group.



Figure 2. Location of survey sites (seagrass present & absent) in the Lizard Island Group survey area - October 1995.

Table 1. Mapping quality for seagrass meadow boundaries mapped in the Lizard Island Group survey area - October 1995.

Mapping Quality	Data Sets	Comments
±25m	Rectified aerial photo & dive survey.	Detailed checking of meadow boundary during dive surveys. Aerial photo of high resolution.
±30m	Rectified aerial photo & dive survey.	Some meadow boundaries checked during dive survey. Aerial photo of low resolution.
±100m	Dive survey only.	Subtidal meadows not visible in remote-sensing images. Data density generally low and reliant solely on dive surveys.

Results

Seagrass species, communities and distribution

Seven species of seagrasses (from 2 families) were found in the Lizard Island Group survey area (see Appendix 1):

Family CYMODOCEACEAE Taylor

Cymodocea serrulata (R. Br.) Aschers. & Magnus

Halodule uninervis (wide) (Forsk.) Aschers.

Syringodium isoetifolium (Aschers.) Dandy

Family HYDROCHARITACEAE Jussieu

Halophila ovalis (Br.) D.J. Hook.

Halophila spinulosa (R. Br.) Aschers. in Neumayer

Thalassia hemprichii (Ehrenb.) Aschers. in Petermann

Halophila sp. (cf. *Halophila capricorni* Larkum)

Seagrass was present at 56 (36 %) of the 157 sites surveyed (Figure 2), and of these sites 85 % were on sandy substrates. Seagrass habitats within the Lizard Island Group survey area covered 292 ± 78 ha (Figure 3, Table 2). The major areas of seagrass habitat on both the reef-flat and subtidal habitat were dominated by *Halophila* species (70% of total area) (Plates 1 & 2).

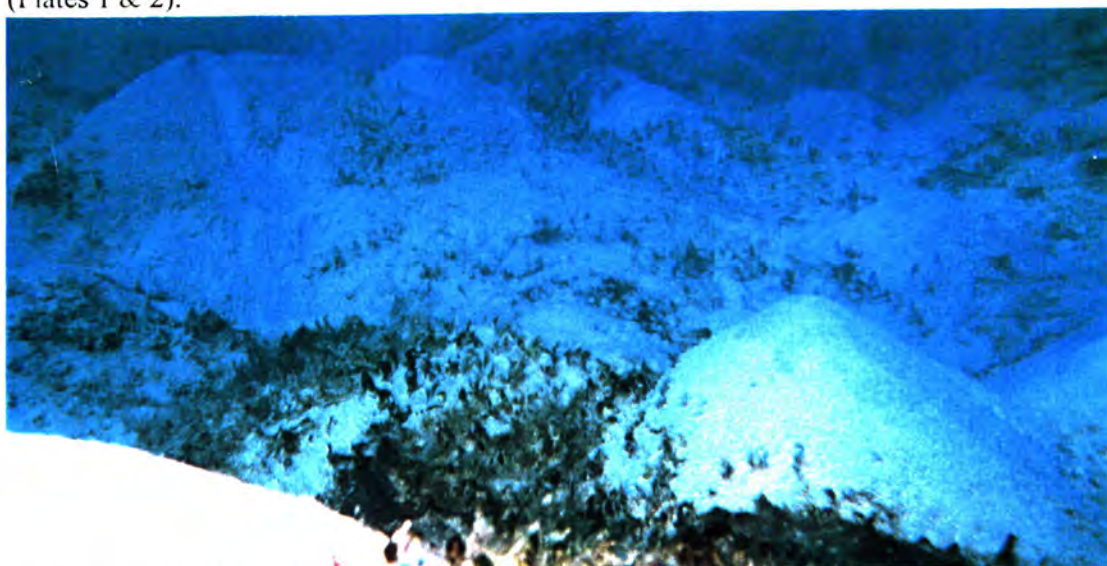


Plate 1. *Halophila* habitat with blue-green filamentous algae on reef flat, Lizard Island (October 1995).



Plate 2. Subtidal *Halophila* habitat (*H. ovalis*, *H. spinulosa* with the algae *Caulerpa mexicana*) at 20 m depth, Lizard Island - October 1995.

22 seagrass meadows, of 9 habitat types, were identified in the survey area (Table 2) (Figure 3). The most widely distributed seagrass habitats were dominated by *Halophila spinulosa*, which were found in subtidal areas adjacent to Watson's Bay (Figure 3). The seagrass habitat of greatest biomass was *Halophila uninervis*/*Halophila* mixed (Table 2), located mainly in Watson's Bay (Figure 3 & 4a). Seagrass meadows on the reef flat were mainly low in biomass and dominated by *Thalassia hemprichii* (Figure 4b).

Table 2. Description of seagrass habitats in the Lizard Island survey area - October 1995
Ranges in brackets.

Seagrass habitat	Distribution (ha)	# of meadows	mean biomass (g DW m ⁻²)	% cover seagrass	% cover Algae
<i>Halophila</i> (mixed spp)	22.3 (8.3-42.6)	1	6.08 ± 1.41 (1.94-8.23)	30	35 (0-70)
<i>Halophila</i> sp.	30.7 (6.7-49.7)	1	4.00 ± 1.03 (0.89-8.14)	15 (10-20)	3.5 (5-40)
<i>Halophila ovalis</i>	1.22 (1.3-4.3)	4	3.94 ± 0.63 (0-6.40)	20.25 (1-40)	30 (5-90)
<i>H. ovalis</i> / <i>Thalassia hemprichii</i>	0.44 (0.4-1.5)	1	3.26 ± 0.36 (1.81-4.10)	5	7.5 (5-10)
<i>Halophila spinulosa</i>	145.51 (75.6-214.1)	1	6.41 ± 0.91 (0-21.60)	20.6 (1-70)	14.6 (0-40)
<i>Halodule uninervis</i>	0.32 (0.3-0.32)	2	2.87 ± 0.85 (0.89-5.56)	5.5 (1-10)	40 (0-80)
<i>H. uninervis</i> / <i>Halophila</i> mixed	69.07 (46.1-93.8)	3	10.39 ± 1.08 (0-26.16)	37.5 (0-90)	23.2 (0-70)
<i>H. uninervis</i> / <i>T. Hemprichii</i>	4.86 (1.0-10.9)	2	4.85 ± 0.91 (0-9.68)	26.8 (2-50)	11.3 (0-40)
<i>T. hemprichii</i>	18.06 (7.3-32.6)	7	3.52 ± 0.43 (0-13.29)	17.5 (1-60)	35 (10-80)

All seagrass species when present had mean biomasses below 6 g DW m⁻² (Figure 5). The seagrass species of greatest mean biomass was *Halodule uninervis* and the lowest mean biomass was *Halophila ovalis* (Figure 5).

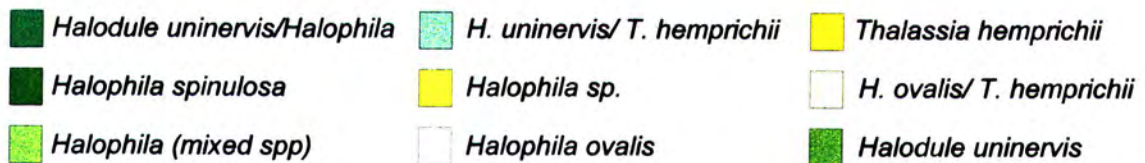
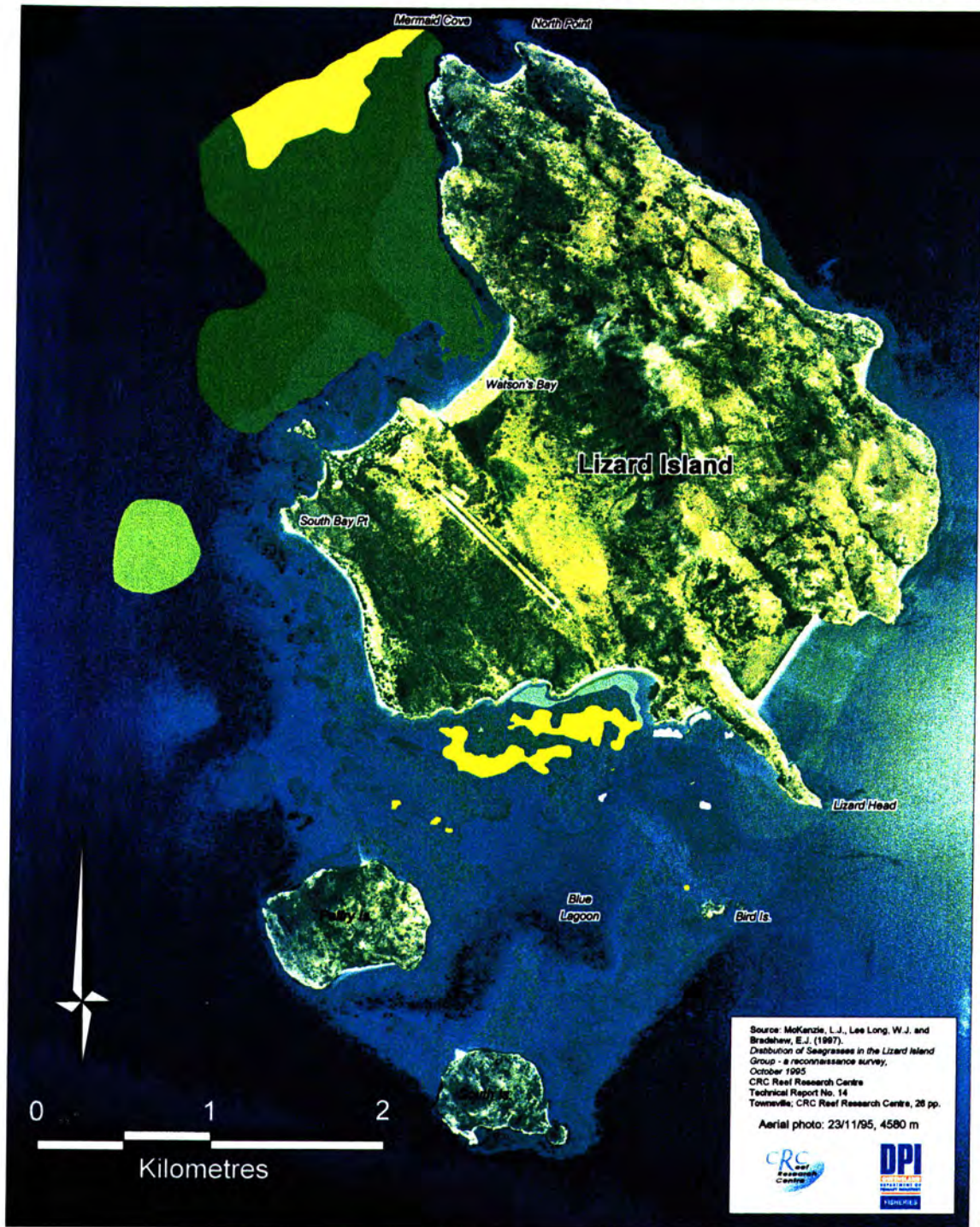


Figure 3. Distribution of seagrass meadows in the Lizard Island Group survey area - October 1995.

a.



b.

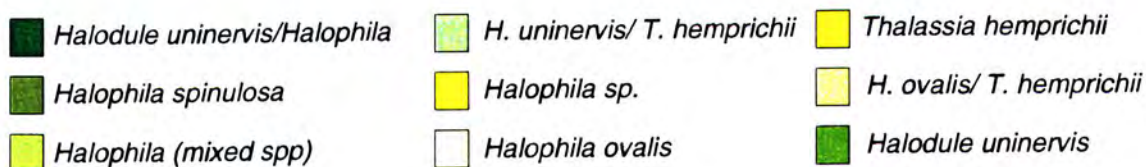
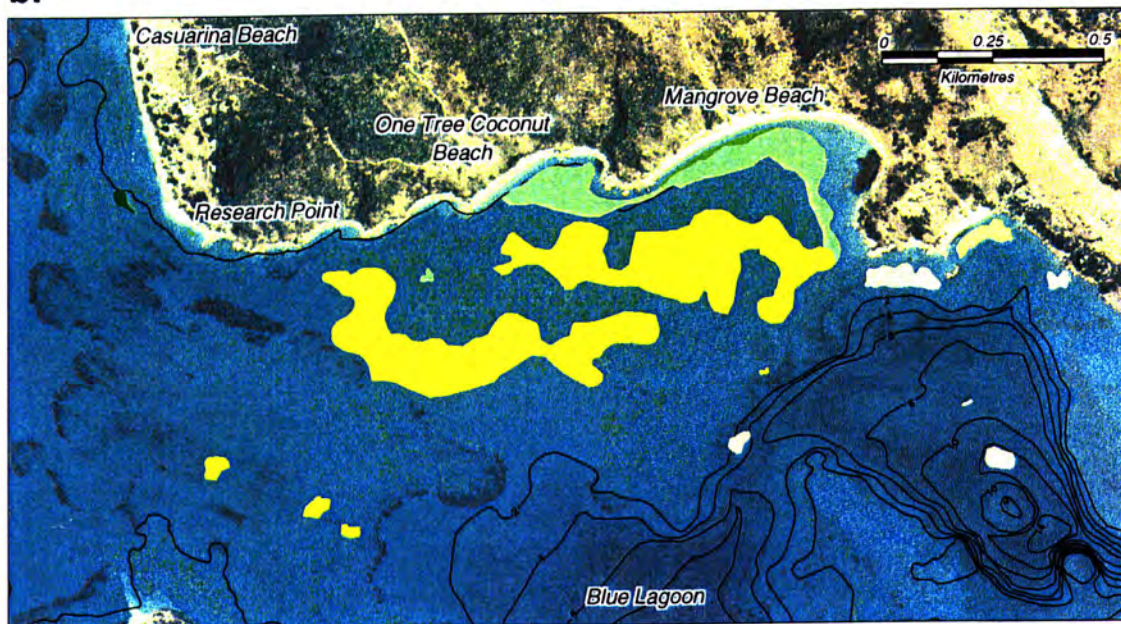


Figure 4. Distribution of seagrass meadows in a. Watsons Bay and b. the reef flat of the Lizard Island Group survey area - October 1995.

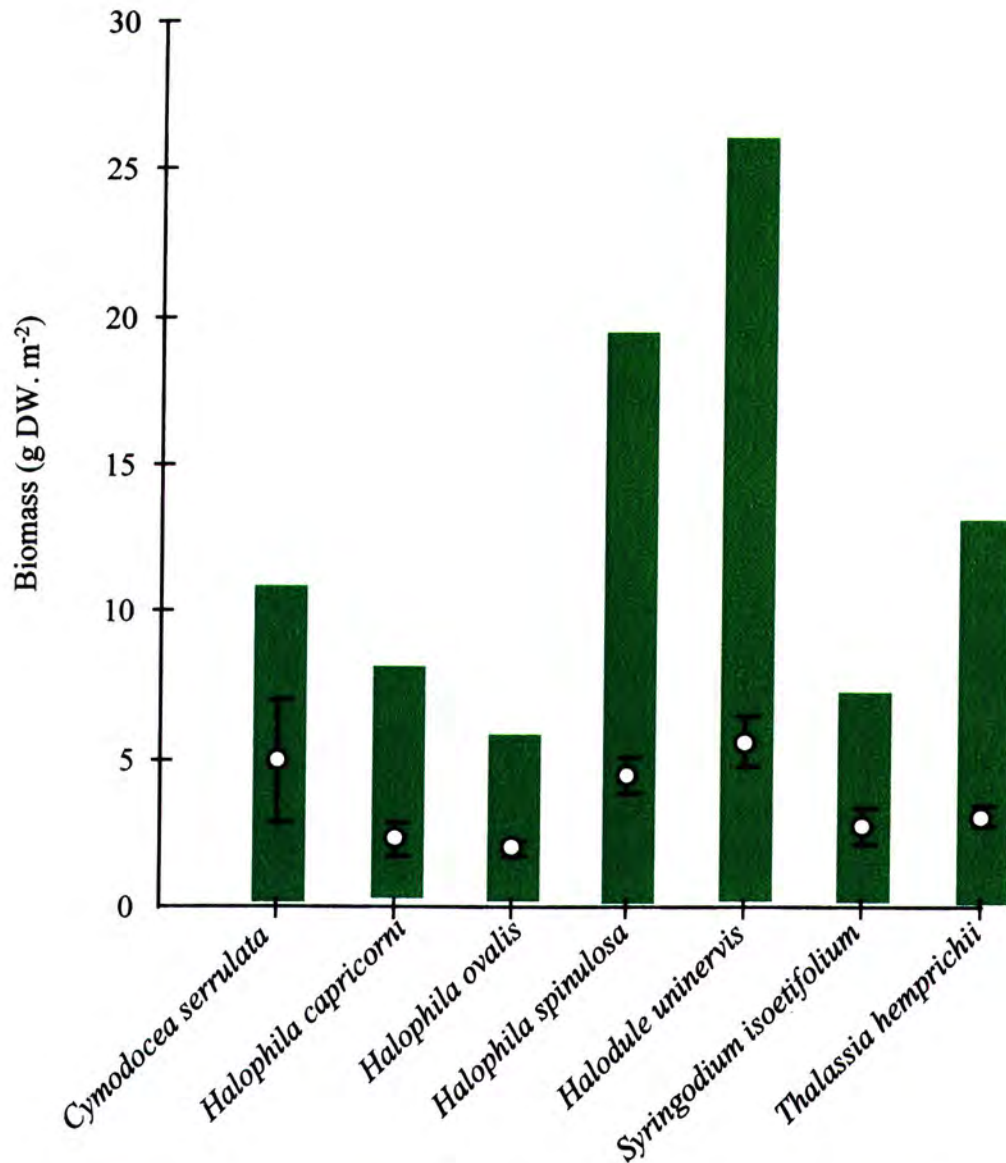


Figure 5. Biomass for each species of seagrass surveyed in the Lizard Island Group survey area - October 1995.

Both male and female flowers were collected from *Halophila* sp. plants (Plates 3, 4 & 5), although male and female reproductive structures were not found on the same plant. Flowers and fruits were also found on plants of *Halophila ovalis* and *Syringodium isoetifolium*.

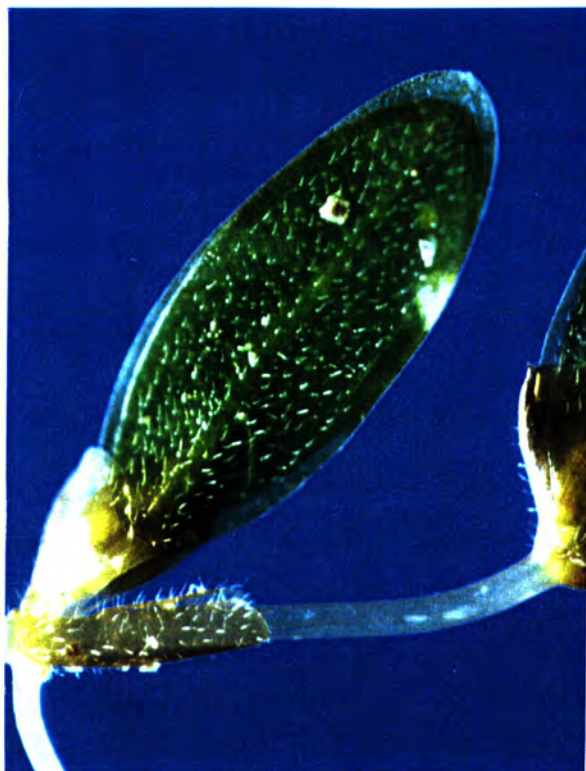


Plate 3. Hairs on adaxial side of *Halophila* sp.

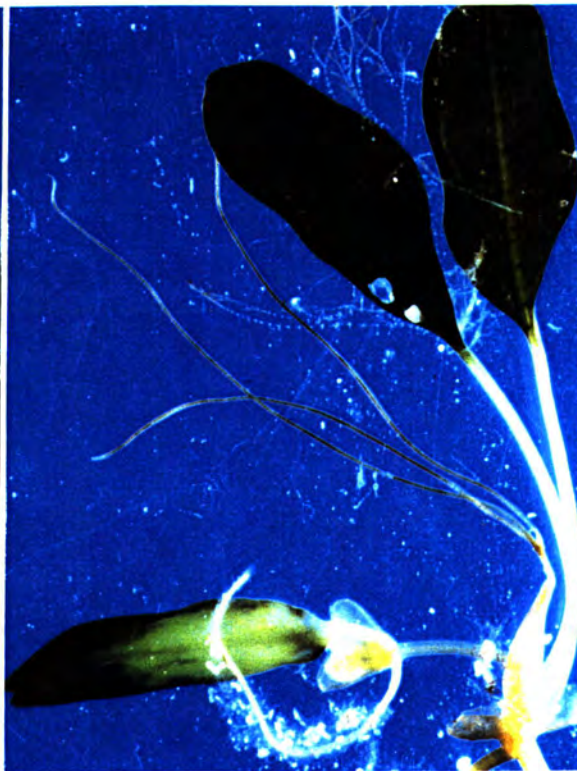


Plate 4. Female flowers of *Halophila* sp.



Plate 5. Male flowers of *Halophila* sp releasing pollen.

Seagrass depth distribution

Halophila ovalis occupied almost all depths to 21 m. Most other species appeared restricted to separate depth zones (Figure 6). *Halophila spinulosa* had the second widest depth distribution (7 to 21 m). *Cymodocea serrulata*, *Halodule uninervis*, *Syringodium isoetifolium* and *Thalassia hemprichii* were all found at depths <11 m. *Halophila capricorni* was found at depths >11 m. *Cymodocea serrulata* and *Thalassia hemprichii* had the smallest depth distributions (<2 m range).

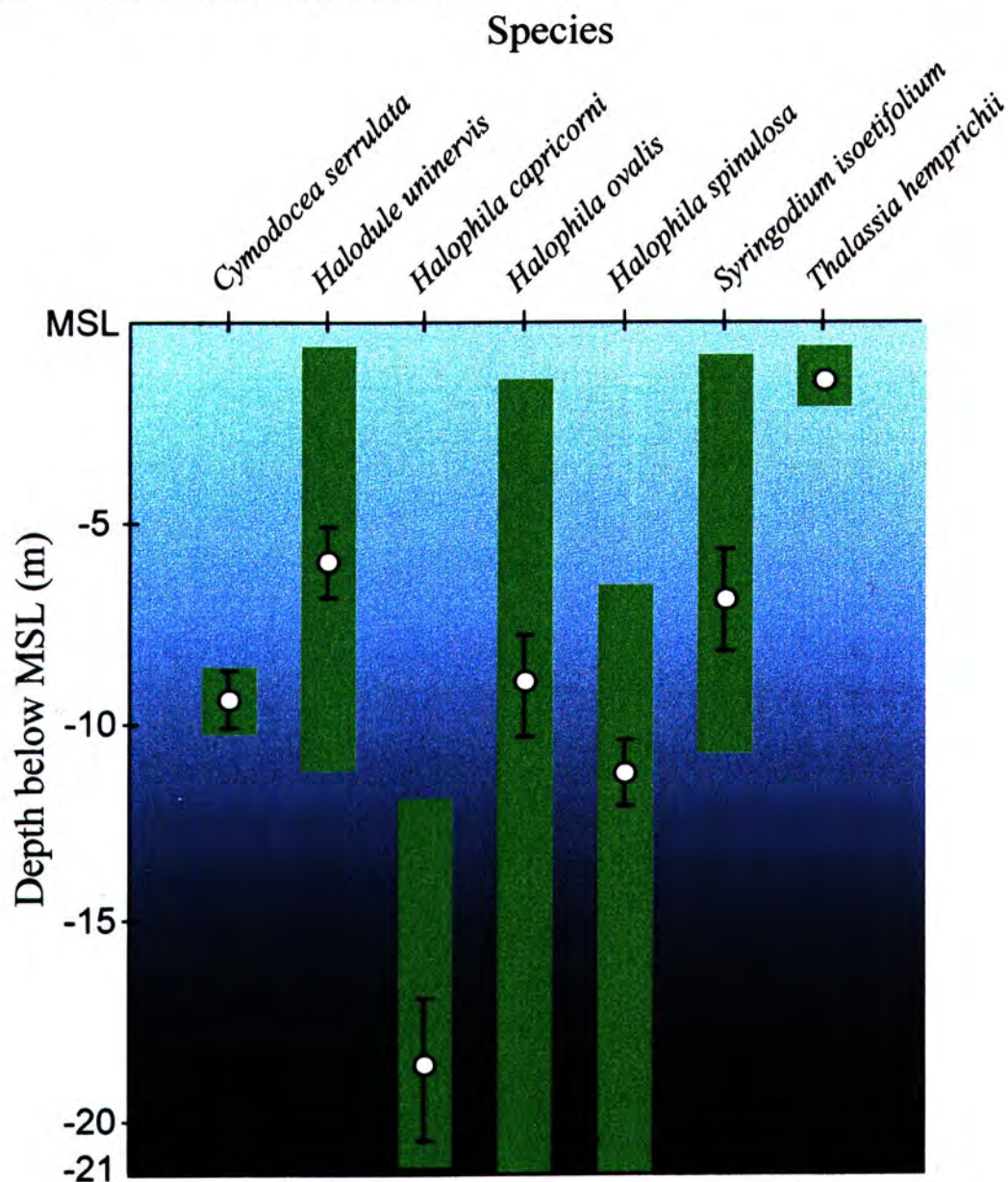


Figure 6. Means, standard errors and ranges of recorded depth (below MSL) of occurrence for seagrasses in waters <21 m in the Lizard Island Group survey area

Algae

Algae were present at 135 sites (86 % of total) in the survey area and at all depths examined. 7 groups of algae were identified during the survey (Table 3). The most common group of algae were the blue-green filamentous (77 % of sites with algae) with a mean cover of 26 % when present (Plate 6).

Table 3. Algal groups present in Lizard Island survey area.

Range in brackets

Algal group	# sites present	# sites with seagrass	Mean % cover
Blue-green filamentous	104	29	26 (5-70)
Blue-green turf	22	2	41 (0-90)
Brown macro-algae	10	10	45 (15-70)
<i>Caulerpa mexicana</i>	4	1	6 (5-10)
<i>Caulerpa</i> spp.	3	2	24 (1-40)
<i>Halimeda</i> spp.	7	4	10 (5-15)
<i>Udotea</i> spp.	6	5	16 (1-40)

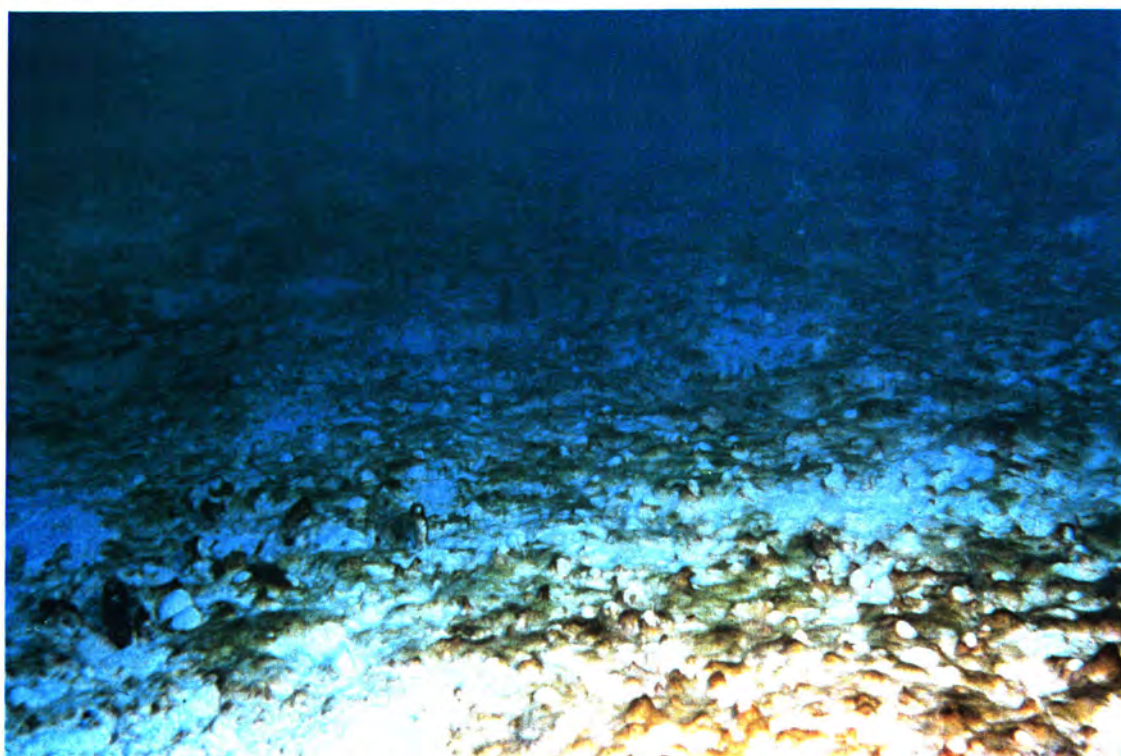


Plate 6. Habitat of blue-green filamentous algae on the reef-flat of the Lizard Island Group.

Dugongs

The only dugongs sighted during the survey were a pair of animals out from Casuarina Beach, although evidence of feeding (feeding trails) was observed at Mangrove Beach (Figure 7) (Plate 7). The trails were observed only in a narrow (3 m width) meadow of *Halodule uninervis*, with sandy substrate, at Mangrove Beach.

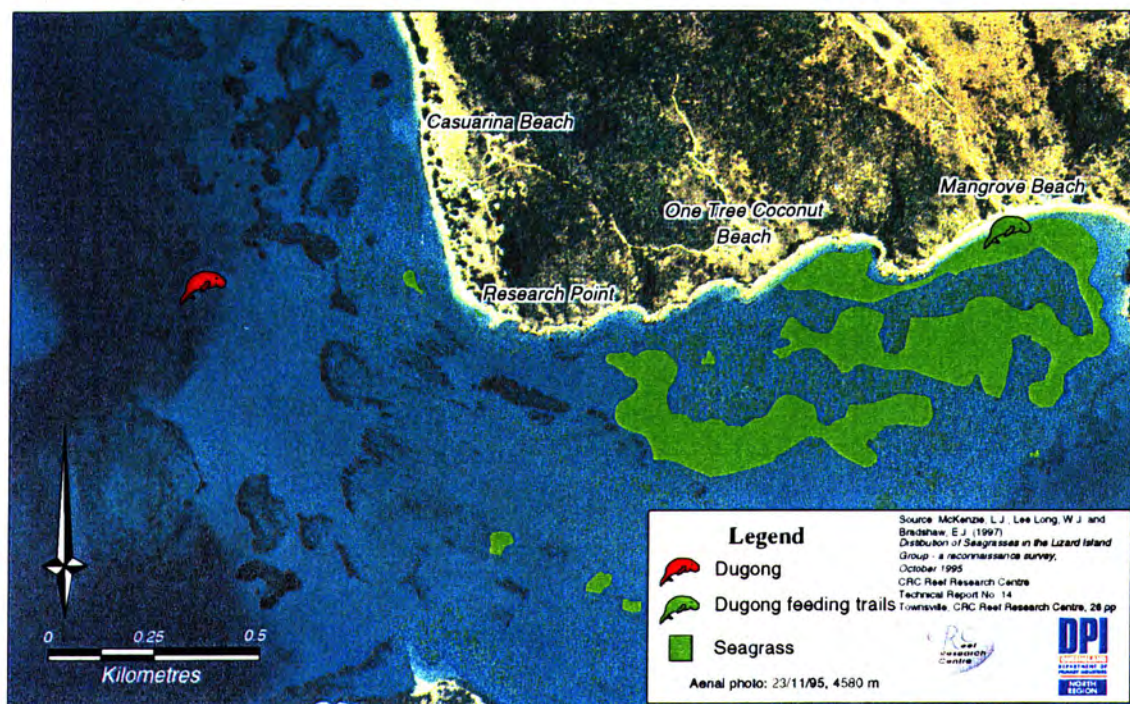


Figure 7. Location of dugong and dugong feeding trails sighted in the Lizard Island Group survey area - October 1995.



Plate 7. Dugong feeding trails at Mangrove Beach, Lizard Island.

Discussion

Seagrass distribution & taxonomy

The present survey is the first time the distribution of seagrasses in the Lizard Island Group have been mapped. It is also the most extensive inventory of seagrasses from the Lizard Island Group to date. Only 1 of the species collected in the present survey has been reported from the Lizard Island Group in the past; Boon (1986) sampled interstitial pore-water in sediments of a *Thalassia hemprichii* meadow on the reef-flat adjacent to One Tree Coconut beach in 1983 and reported no other species from the site. The seagrass plants identified by Price *et al.* (1976) as *Halophila ovata*, lodged in the James Cook University herbarium, were re-identified in 1981 by Dr Ian Price as *Halophila minor* and verified by Ms Jane Mellors (QDPI & TESAG, JCU) at request of the present authors. The *Cymodocea rotundata* voucher specimens identified by Price *et al.* (1976) could not be verified, as the specimens are currently listed as missing from the JCU herbarium. The seagrass species diversity for the Lizard Island Group after the present study totals 8.

Halophila sp. collected in the present survey was similar to the recently described *Halophila capricorni* (Larkum 1996), but exhibited different characteristics to the type specimen, suggesting a possible new or undescribed species. These different characteristics include:

- no male or female flowers were found on the same plant
- stiff hairs completely cover the adaxial side of leaves (Plate 3) (*H. capricorni* is described from plants with stiff hairs confined to the centre of the adaxial).
- plants have only been found in mid- to outer-shelf areas of the northern GBR (Coles *et al.* 1995)

Voucher specimens have been sent to a taxonomist, Professor John Kuo (University of Western Australia), for further consideration.

This survey was conducted at the time of year when most seagrasses in northern Queensland are near their greatest abundance, so that the species list and distribution pattern would be expected to be potentially complete. Seasonal and inter-annual variation in seagrass distribution and abundance are likely to affect the results of this and other surveys of the area.

Seagrass destruction & management implications

Human impacts on the seagrasses in Watson's Bay could include anchor damage, introductions of new species transported on anchors lifted at other seagrass localities, and effluent from vessels and/or tourist facilities on the island. Increases in boat use (especially mooring) in Watson's Bay is currently an issue of concern for marine park managers and anchor damage is of particular concern.

Anchor damage was observed in the seagrass meadows of Watson's Bay where several small pleasure craft and a large passenger vessel were moored during the present survey. In the 5-10 m depth range, "anchor scars" were evident throughout the meadow where anchors had dragged along the seabed for several metres. Larger scars (approximately 15-20 m in length, covering an arc of approximately 15-20 degrees) were found in the 10-15 m depth range. Habitats in this depth range were also unusual due to the high number of large echinoderms and scleractinian solitary corals associated with them.

The shallow-water (<10 m) scars showed evidence of recolonisation/recovery, however deeper-water (>10 m) scars appeared recent, as there was little evidence of seagrass

recovery. It is unknown whether recovery occurs at a faster rate in shallow-waters compared to deep-water meadows and further research on this issue is necessary.

The Great Barrier Reef Marine Park Authority has established a policy and strategy for permanent moorings to protect corals of the Great Barrier Reef from impacts of boat anchors and chains. Little consideration however has been given to other habitats, including seagrasses. Moorings are preferable as they are considered safer and less destructive than anchoring. The Marine Park Authority and Queensland Department of Environment currently require commercial tourist operators that use a site more than twice a week to install environmentally acceptable moorings, approved by a marine architect in specified locations and at the operators cost. We recommend that permanent mooring for larger vessels be considered in the Watson's Bay National Park Zone to help protect the deep water seagrass habitats.

The high number of vessels moored in Watson's Bay suggests that the area may be impacted, but to a lesser extent than areas with a continually high tourist load such as Green Island. For example, Boon (1986) measured the interstitial pore waters in seagrass sediments on the reef-flat near blue-lagoon and reported 6-48 $\mu\text{mol L}^{-1}$ ammonium and 1.5-2.5 $\mu\text{mol L}^{-1}$ phosphorus. McKenzie and Lee Long (1997) however, measured the interstitial pore waters in similar seagrass sediments on the reef-flat of Green Island and reported 2.1-84.8 $\mu\text{mol L}^{-1}$ ammonium and 0.5-5.5 $\mu\text{mol L}^{-1}$ phosphorus. Acute (low levels) of impact may not present ecological problems, however chronic (continual) and increased impact/damage should be of concern to managers of the Lizard Island Group.

Acknowledgments

We thank Lizard Island Research Station co-directors Lyle Vail and Anne Hoggett and station staff Lance and Marianne Pearce for making our stay that much more enjoyable. This project was funded by the Australian Cooperative Research Centres Program through the Cooperative Research Centre for Ecologically Sustainable Development of the Great Barrier Reef and the Queensland Department of Primary Industries.

References

- Boon, P.I. (1986). Uptake and release of nitrogen compounds in coral reef and seagrass, *Thalassia hemprichii* (Ehrenb.) Aschers., bed sediments at Lizard Island, Queensland. *Australian Journal of Marine and Freshwater Research* **37**, 11-19.
- Bulthuis, D.A. (1987). Effects of temperature on photosynthesis and growth of seagrasses. *Aquatic Botany* **27**, 27-40.
- Coles, R.G., Lee Long, W.J., Squire, B.A., Squire, L.C., and Bibby, J.M. (1987a). Distribution of seagrass and associated juvenile commercial prawns in north-eastern Queensland waters. *Australian Journal of Marine and Freshwater Research* **38**, 103-19.
- Coles, R.G., Lee Long, W.J., Watson, R.A., and Derbyshire, K.J. (1993). Distribution of seagrasses, and their fish and penaeid prawn communities, in Cairns Harbour, a tropical estuary, northern Queensland, Australia. In 'Tropical Seagrass Ecosystems; Structure and Dynamics in the Indo-West Pacific.' *Australian Journal of Marine and Freshwater Research* **44**, 193-210.

- Coles, R.G., Lee Long, W.J., McKenzie, L.J., Short, M., Rasheed, M.A. and Vidler, K. (1995) Distribution of deep-water seagrass habitats between Cape Weymouth and Cape Tribulation, northeastern Queensland. Unpublished report to the Great Barrier Reef Marine Park Authority and the CRC Reef Research. (NFC, Cairns) 33 pp.
- Dennison, W.C. (1987). Effects of light on seagrass photosynthesis, growth and depth distribution. *Aquatic Botany* **27**, 15-26.
- Dennison, W.C., Orth, R.J., Moore, K.A., Stevenson, J.C., Carter, V., Kollar, S., Bergstrom, P.W., and Batiuk, R.A. (1993). Assessing water quality with submersed aquatic vegetation: Habitat requirements as barometers of Chesapeake Bay health. *BioScience* **42**(2), 86-94.
- Erftemeijer, P.L.A. (1994). Differences in nutrient concentrations and resources between seagrass communities on carbonate and terrigenous sediments in South Sulawesi, Indonesia. *Bulletin of Marine Science* **54**(2), 403-419.
- Frith, C.A., Leis, J.M. and Goldman, B. (1986). Currents in the Lizard Island region of the Great Barrier Reef lagoon and their relevance to potential movements of larvae. *Coral Reefs* **5**, 81-92.
- Jackson, J.B.C., Cubitt, J.D., Keller, B.D., Batista, V., Burns, K., Caffey, H.M., Caldwell, R.L., Garrity, S.D., Getter, C.D., Gonzalez, C., Guzman, H.M., Kaufmann, K.W., Knap, A.H., Levings, S.C., Marshall, M.J., Steger, R., Thompson, R.C., and Weil, E. (1989). Ecological effects of a major oil spill on Panamanian Coastal marine Communities. *Science* **243**, 37-44.
- Kuo, J., and McComb, A. J. (1989). Seagrass taxonomy, structure and function. In 'Biology of Seagrasses.' (Eds A. W. D. Larkum, A. J. McComb and S. A. Shepherd.) pp. 6-73. (Elsevier: New York.)
- Larkum, A.W.D. (1995). *Halophila capricorni* (Hydrocharitaceae): a new species of seagrass from the coral sea. *Aquatic Botany* (In press).
- Lee Long, W.J., Coles, R.G., Helmke, S.A. and Bennett, R.E. (1989). Seagrass habitats in coastal, mid shelf and reef waters from Lookout Point to Barrow Point in north-eastern Queensland, a report to the Great Barrier Reef Marine Park Authority. Queensland Department of Primary Industries. 24pp.
- Lee Long, W.J., Mellors, J.E., and Coles, R.G. (1993). Seagrasses between Cape York and Hervey Bay, Queensland, Australia. *Australian Journal of Marine and Freshwater Research* **44**(1), 19-31.
- McKenzie, L.J. (1994). Seasonal changes in biomass and shoot characteristics of a *Zostera capricorni* Aschers. dominant meadow in Cairns Harbour, northern Queensland. *Australian Journal of Marine and Freshwater Research* **45**, 1337-1352.
- McKenzie, L.J. and Lee Long, W.J. (1997) Effects of sewage discharge and other factors on the Green Island seagrass meadows. CRC Reef Research Technical Report. (In Prep).

- Mellors, J.E. (1991). An evaluation of a rapid visual technique for estimating seagrass biomass. *Aquatic Botany* **42**, 67-73.
- Mellors, J.E., Marsh, H., and Coles, R.G. (1993). Intra-annual changes in seagrass standing crop, Green Island, northern Queensland. In 'Tropical Seagrass Ecosystems; Structure and Dynamics in the Indo-West Pacific.' *Australian Journal of Marine and Freshwater Research* **44**, 33-42.
- Neverauskas, V.P. (1988). Response of a *Posidonia* community to prolonged reduction in light. *Aquatic Botany* **31**, 361-366.
- Orth, R.J. (1977). Effect of nutrient enrichment on growth of eelgrass *Zostera marina* in the Chesapeake Bay, Virginia, USA. *Marine Biology* **44**, 187-194.
- Poiner, I.R., Walker, D.I., and Coles, R.G. (1989). Regional studies - seagrasses of tropical Australia. In 'Biology of Seagrasses: A treatise on the biology of seagrasses with special reference to the Australian region.' (Eds A. W. D. Larkum, A. J. McComb and S. A. Shepherd.) Chapter 10, pp. 279-296. (Elsevier: New York.)
- Preen, A., Lee Long, W.J., and Coles, R.G. (1995). Flood and cyclone related loss, and partial recovery, of more than 1000 km² of seagrasses in Hervey Bay, Qld, Australia. *Aquatic Botany* (In Press).
- Price, I.R., Larkum, A.W.D. and Bailey, A. (1976) Appendix: check list of marine benthic plants collected in the Lizard Island area. *Australian Journal of Plant Physiology* **3**, 3-8.
- Pringle, A.W. (1989). 'The history of dredging in Cleveland Bay, Queensland and its effect on sediment movement and on the growth of mangroves, corals, and seagrass.' Great Barrier Reef Marine Park Authority Research Publication, 177 pp.
- Shepherd, S.A., McComb, A.J., Bulthuis, D.A., Neverauskas, V., Steffensen, D.A., and West, R. (1989). Decline of seagrass. In 'Biology of Seagrasses.' (Eds A.W.D. Larkum, A.J. McComb and S.A. Shepherd) Chapter 12, pp. 346-393. (Elsevier: New York.)
- Watson, R.A., Coles, R.G., and Lee Long, W.J. (1993). Simulation estimates of annual yield and landed value for commercial penaeid prawns from a tropical seagrass habitat, northern Queensland, Australia. In 'Tropical Seagrass Ecosystems; Structure and Dynamics in the Indo-West Pacific.' *Australian Journal of Marine and Freshwater Research* **44**, 211-220.
- Williams, S.L., and Dennison, W.C. (1990). Light availability and diurnal growth of a green macroalga (*Caulerpa cupressoides*) and a seagrass (*Halophila decipiens*). *Marine Biology* **106**(3), 437-443.
- Zieman, J.C. (1976). The ecological effects of physical damage from motor boats on turtle grass beds in Southern Florida. *Aquatic Botany* **2**, 127-139.

Appendix 1

Plates 8 - 15

The following seagrass species were collected from sites at Lizard Island in October 1995 (voucher specimens are preserved in the NFC herbarium for future reference)

Plate 8.	<i>Cymodocea serrulata</i>	NFC/36
Plate 9.	<i>Halodule uninervis</i>	NFC/37, NFC/39
Plate 10.	<i>Halophila ovalis</i> (shallow)	NFC/41
Plate 11.	<i>Halophila ovalis</i> (deep)	NFC/43
Plate 12.	<i>Halophila</i> sp (<i>cf Halophila capricorni</i>)	NFC/44
Plate 13.	<i>Halophila spinulosa</i>	NFC/42
Plate 14.	<i>Syringodium isoetifolium</i>	NFC/40
Plate 15.	<i>Thalassia hemprichii</i>	NFC/38

Plate 8. *Cymodocea serrulata*



● ***Cymodocea serrulata***

Source: McKenzie, L.J., Lee Long, W.J. and
Bradshaw, E.J (1997).
*Distribution of Seagrasses in the Lizard Island
Group - a reconnaissance survey,*
October 1995.
CRC Reef Research Centre
Technical Report No. 14
Townsville; CRC Reef Research Centre, 26 pp.



Plate 9. *Halodule uninervis*



● ***Halodule uninervis***

Source: McKenzie, L.J., Lee Long, W.J. and
Bradshaw, E.J (1997).
*Distribution of Seagrasses in the Lizard Island
Group - a reconnaissance survey,
October 1995.*
CRC Reef Research Centre
Technical Report No. 14
Townsville; CRC Reef Research Centre, 26 pp.



Plate 10. *Halophila ovalis* (shallow sites)



2 cm

● *Halophila ovalis* (shallow sites)

Source: McKenzie, L.J., Lee Long, W.J. and Bradshaw, E.J (1997).
Distribution of Seagrasses in the Lizard Island Group - a reconnaissance survey, October 1995.
CRC Reef Research Centre
Technical Report No. 14
Townsville; CRC Reef Research Centre, 26 pp.



Plate 11. *Halophila ovalis* (deep sites)



● *Halophila ovalis* (deep sites)

Source: McKenzie, L.J., Lee Long, W.J. and
Bradshaw, E.J (1997).
*Distribution of Seagrasses in the Lizard Island
Group - a reconnaissance survey,*
October 1995.
CRC Reef Research Centre
Technical Report No. 14
Townsville; CRC Reef Research Centre, 26 pp.



Plate 12. *Halophila* sp.



● *Halophila* sp.

Source: McKenzie, L.J., Lee Long, W.J. and Bradshaw, E.J (1997).
Distribution of Seagrasses in the Lizard Island Group - a reconnaissance survey, October 1995.
CRC Reef Research Centre
Technical Report No. 14
Townsville; CRC Reef Research Centre, 26 pp.



Plate 13. *Halophila spinulosa*



2 cm

● *Halophila spinulosa*

Source: McKenzie, L.J., Lee Long, W.J. and Bradshaw, E.J (1997).
Distribution of Seagrasses in the Lizard Island Group - a reconnaissance survey, October 1995.
CRC Reef Research Centre
Technical Report No. 14
Townsville; CRC Reef Research Centre, 26 pp.



Plate 14. *Syringodium isoetifolium*



● ***Syringodium isoetifolium***

Source: McKenzie, L.J., Lee Long, W.J. and Bradshaw, E.J (1997).
Distribution of Seagrasses in the Lizard Island Group - a reconnaissance survey, October 1995.
CRC Reef Research Centre
Technical Report No. 14
Townsville; CRC Reef Research Centre, 26 pp.



Plate 15. *Thalassia hemprichii*



● *Thalassia hemprichii*

Source: McKenzie, L.J., Lee Long, W.J. and Bradshaw, E.J (1997).
Distribution of Seagrasses in the Lizard Island Group - a reconnaissance survey, October 1995.

CRC Reef Research Centre
Technical Report No. 14
Townsville; CRC Reef Research Centre, 26 pp.

